

For Research Use Only

CoraLite® Plus 488-conjugated Dystrophin Monoclonal antibody

Catalog Number:CL488-68120



Basic Information

Catalog Number:

CL488-68120

Size:

100ul , Concentration: 1000 ug/ml by
Nanodrop;

Source:

Mouse

Isotype:

IgG2a

Immunogen Catalog Number:

AG4392

GenBank Accession Number:

BC028720

GeneID (NCBI):

1756

UNIPROT ID:

P11532

Full Name:

dystrophin

Calculated MW:

3685 aa, 427 kDa

Observed MW:

70 kDa, 430 kDa

Purification Method:

Protein A purification

CloneNo.:

1G12E6

Recommended Dilutions:

IF-P 1:50-1:500

IF/ICC 1:50-1:500

Excitation/Emission maxima wavelengths:

493 nm / 522 nm

Applications

Tested Applications:

IF/ICC, IF-P, FC (Intra)

Species Specificity:

human, mouse, rat

Positive Controls:

IF-P : mouse skeletal muscle tissue,

IF/ICC : H9C2 cells,

Background Information

Dystrophin (DMD or BMD) is a large muscle protein whose mutations cause Duchenne muscular dystrophy (DMD) and Becker muscular dystrophy (BMD), the childhood neuromuscular disorders that result in progressive muscle weakness, respiratory difficulties and cardiovascular dysfunction. Dystrophin is a crucial component of the dystrophin-glycoprotein complex which is essential for muscle membrane integrity and stability. Dystrophin is located on the cytoplasmic face of the sarcolemma and connects the cytoskeletal network to the sarcolemma and extracellular matrix. Multiple isoforms of dystrophin exist due to the alternative splicing, with a wide range of MW (69-72, 110-143, 271, 426 kDa). Most tissues contain transcripts of several isoforms.

Storage

Storage:

Store at -20°C. Avoid exposure to light. Stable for one year after shipment.

Storage Buffer:

PBS with 50% Glycerol, 0.05% Proclin300, 0.5% BSA, pH 7.3.

Aliquoting is unnecessary for -20°C storage

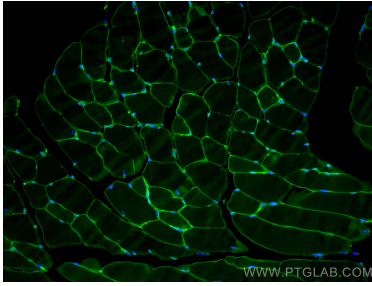
For technical support and original validation data for this product please contact:

T: 1 (888) 4PTGLAB (1-888-478-4522) (toll free
in USA), or 1(312) 455-8498 (outside USA)

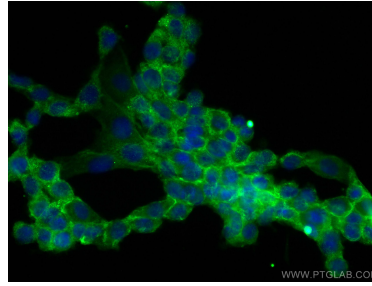
E: proteintech@ptglab.com
W: ptglab.com

This product is exclusively available under Proteintech Group brand and is not available to purchase from any other manufacturer.

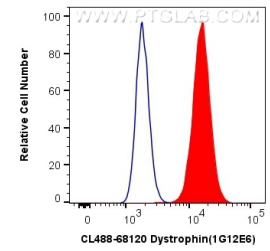
Selected Validation Data



Immunofluorescent analysis of (4% PFA) fixed mouse skeletal muscle tissue using CoraLite® Plus 488 Dystrophin antibody (CL488-68120, Clone: 1G12E6) at dilution of 1:200.



Immunofluorescent analysis of (-20°C Methanol) fixed H9C2 cells using CoraLite® Plus 488 Dystrophin antibody (CL488-68120, Clone: 1G12E6) at dilution of 1:200.



1×10^6 HepG2 cells were intracellularly stained with 0.8 μ g CoraLite® Plus 488 Anti-Human Dystrophin (CL488-68120, Clone: 1G12E6) (red), or 0.8 μ g CoraLite® Plus 488 Mouse IgG2a Isotype Control (C1.18.4) (CL488-65208, Clone: C1.18.4) (blue). Cells were fixed with 4% PFA and permeabilized with Flow Cytometry Perm Buffer (PF00011-C).