

For Research Use Only

CoraLite® Plus 488-conjugated PPP1CC Monoclonal antibody

Catalog Number: CL488-68122



Basic Information

Catalog Number: CL488-68122	GenBank Accession Number: BC014073	Purification Method: Protein G purification
Size: 100ul , Concentration: 1000 ug/ml by Nanodrop;	GeneID (NCBI): 5501	CloneNo.: 2G11C3
Source: Mouse	UNIPROT ID: P36873	Recommended Dilutions: IF/ICC 1:50-1:500
Isotype: IgG1	Full Name: protein phosphatase 1, catalytic subunit, gamma isoform	Excitation/Emission maxima wavelengths: 493 nm / 522 nm
Immunogen Catalog Number: AG32348	Calculated MW: 35 kDa	
	Observed MW: 35 kDa	

Applications

Tested Applications: IF/ICC	Positive Controls: IF/ICC : HeLa cells,
Species Specificity: Human, mouse, rat	

Background Information

PPP1CC, also named as PP-1G, belongs to the PPP phosphatase family and PP-1 subfamily. Protein phosphatase 1 (PP1) is essential for cell division, and participates in the regulation of glycogen metabolism, muscle contractility and protein synthesis. It is involved in regulation of ionic conductances and long-term synaptic plasticity. PPP1CC may play an important role in dephosphorylating substrates such as the postsynaptic density-associated Ca²⁺/calmodulin dependent protein kinase II.

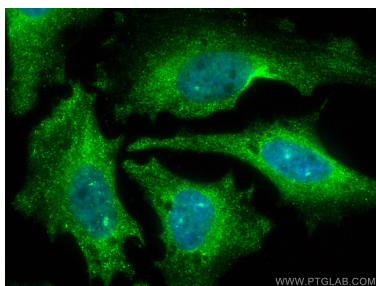
Storage

Storage:
Store at -20°C. Avoid exposure to light. Stable for one year after shipment.
Storage Buffer:
PBS with 50% Glycerol, 0.05% Proclin300, 0.5% BSA, pH 7.3.
Aliquoting is unnecessary for -20°C storage

For technical support and original validation data for this product please contact:
T: 1 (888) 4PTGLAB (1-888-478-4522) (toll free in USA), or 1(312) 455-8498 (outside USA)
E: proteintech@ptglab.com
W: ptglab.com

This product is exclusively available under Proteintech Group brand and is not available to purchase from any other manufacturer.

Selected Validation Data



Immunofluorescent analysis of (4% PFA) fixed HeLa cells using Coralite® Plus 488 PPP1CC antibody (CL488-68122, Clone: 2G11C3) at dilution of 1:200.