

For Research Use Only

CoraLite® Plus 488-conjugated PSMA8 Monoclonal antibody

Catalog Number: CL488-68123

Featured Product



Basic Information

Catalog Number:

CL488-68123

Size:

100ul , Concentration: 1000 ug/ml by Nanodrop;

Source:

Mouse

Isotype:

IgG2a

Immunogen Catalog Number:

AG5138

GenBank Accession Number:

BC042820

GeneID (NCBI):

143471

UNIPROT ID:

Q8TAA3

Full Name:

proteasome (prosome, macropain) subunit, alpha type, 8

Calculated MW:

29 kDa

Observed MW:

28 kDa

Purification Method:

Protein A purification

CloneNo.:

2G2G3

Recommended Dilutions:

IF/ICC 1:50-1:500

Excitation/Emission maxima wavelengths:

493 nm / 522 nm

Applications

Tested Applications:

IF/ICC

Species Specificity:

Human, mouse, rat, pig, rabbit

Positive Controls:

IF/ICC : HepG2 cells,

Background Information

1

Storage

Storage:

Store at -20°C. Avoid exposure to light. Stable for one year after shipment.

Storage Buffer:

PBS with 50% Glycerol, 0.05% Proclin300, 0.5% BSA, pH 7.3.

Aliquoting is unnecessary for -20°C storage

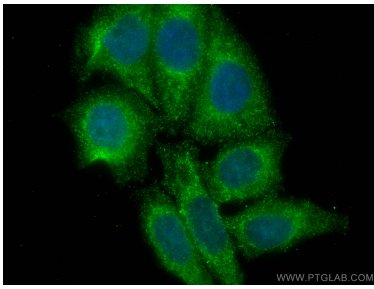
For technical support and original validation data for this product please contact:

T: 1 (888) 4PTGLAB (1-888-478-4522) (toll free in USA), or 1(312) 455-8498 (outside USA)

E: proteintech@ptglab.com
W: ptglab.com

This product is exclusively available under Proteintech Group brand and is not available to purchase from any other manufacturer.

Selected Validation Data



Immunofluorescent analysis of (4% PFA) fixed HepG2 cells using CoraLite® Plus 488 PSMA8 antibody (CL488-68123, Clone: 2G2G3) at dilution of 1:200.