

For Research Use Only

CoraLite® Plus 488-conjugated LPIN1 Monoclonal antibody

Catalog Number: CL488-68124



Basic Information

Catalog Number:

CL488-68124

Size:

100ul , Concentration: 1000 ug/ml by Nanodrop;

Source:

Mouse

Isotype:

IgG2a

Immunogen Catalog Number:

AG25813

GenBank Accession Number:

BC030537

GeneID (NCBI):

23175

UNIPROT ID:

Q14693

Full Name:

lipin 1

Calculated MW:

890 aa, 99 kDa

Observed MW:

130 kDa

Purification Method:

Protein A purification

CloneNo.:

3G11B10

Recommended Dilutions:

IF/ICC 1:50-1:500

Excitation/Emission maxima wavelengths:

493 nm / 522 nm

Applications

Tested Applications:

IF/ICC

Species Specificity:

Human, Rat, Mouse

Positive Controls:

IF/ICC : NIH/3T3 cells,

Background Information

LPIN1, also named as KIAA0188, belongs to the lipin family. It is a magnesium-dependent phosphatidate phosphatase enzyme which catalyzes the conversion of phosphatidic acid to diacylglycerol during triglyceride, phosphatidylcholine and phosphatidylethanolamine biosynthesis and therefore controls the metabolism of fatty acids at different levels. LPIN1 has a molecular weight of about 99 kDa but predicted bands around 130 kDa. (PMID:20231281, PMID:29765047).

Storage

Storage:

Store at -20°C. Avoid exposure to light. Stable for one year after shipment.

Storage Buffer:

PBS with 50% Glycerol, 0.05% Proclin300, 0.5% BSA, pH 7.3.

Aliquoting is unnecessary for -20°C storage

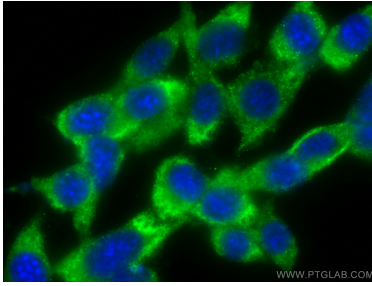
For technical support and original validation data for this product please contact:

T: 1 (888) 4PTGLAB (1-888-478-4522) (toll free in USA), or 1(312) 455-8498 (outside USA)

E: proteintech@ptglab.com
W: ptglab.com

This product is exclusively available under Proteintech Group brand and is not available to purchase from any other manufacturer.

Selected Validation Data



Immunofluorescent analysis of (-20°C Methanol) fixed NIH/3T3 cells using CoraLite® Plus 488 LPIN1 antibody (CL488-68124, Clone: 3G11B10) at dilution of 1:100.