

For Research Use Only

CoraLite® Plus 488-conjugated RBP5 Monoclonal antibody



Catalog Number: **CL488-68126**

Basic Information

| | | |
|---|--|---|
| Catalog Number: CL488-68126 | GenBank Accession Number: BC029355 | Purification Method: Protein G purification |
| Size: 100ul , Concentration: 1000 µg/ml by Nanodrop; | GeneID (NCBI): 83758 | CloneNo.: 1G7E2 |
| Source: Mouse | Full Name: retinol binding protein 5, cellular | Recommended Dilutions: IF 1:50-1:500 |
| Isotype: IgG1 | Calculated MW: 135 aa, 16 kDa | Excitation/Emission maxima wavelengths: 493 nm / 522 nm |
| Immunogen Catalog Number: AG24562 | Observed MW: 16-18 kDa | |

Applications

| | |
|---|---|
| Tested Applications: IF | Positive Controls: IF : HepG2 cells, A431 cells |
| Species Specificity: Human, pig | |

Background Information

RBP5 (CRBP III) belongs to the fatty-acid binding protein (FABP) family. Human liver and kidney contain the highest levels of CRBP III mRNA, and CRBP III is as a major human intracellular carrier of retinol (PMID:11274389). RBP5 iron response are reversible by genetic complementation. And increased RBP5 expression occurs by a post-transcriptional feedback mechanism whereby RBP5 interacts with its own, and with PAP2 mRNAs. RBP5 is the most significant of the proteins upregulated by iron starvation (PMID:34161395). RBP5 has an estimated molecular mass (15.9 kDa) typical of this protein superfamily (PMID:11274389).

Storage

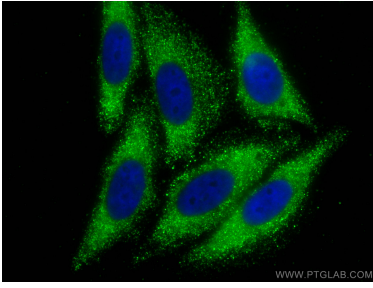
Storage:
Store at -20°C. Avoid exposure to light. Stable for one year after shipment.
Storage Buffer:
PBS with 50% Glycerol, 0.05% Proclin300, 0.5% BSA, pH 7.3.
Aliquoting is unnecessary for -20°C storage

*** 20ul sizes contain 0.1% BSA

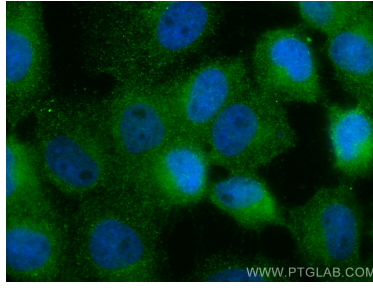
For technical support and original validation data for this product please contact:
T: 1 (888) 4PTGLAB (1-888-478-4522) (toll free in USA), or 1(312) 455-8498 (outside USA)
E: proteintech@ptglab.com
W: ptglab.com

This product is exclusively available under Proteintech Group brand and is not available to purchase from any other manufacturer.

Selected Validation Data



Immunofluorescent analysis of (-20°C Ethanol) fixed HepG2 cells using CoraLite® Plus 488 RBP5 antibody (CL488-68126, Clone: 1G7E2) at dilution of 1:200.



Immunofluorescent analysis of (4% PFA) fixed A431 cells using CoraLite® Plus 488 RBP5 antibody (CL488-68126, Clone: 1G7E2) at dilution of 1:200.