

For Research Use Only

# CoraLite® Plus 488-conjugated PLA2G4A Monoclonal antibody



Catalog Number: **CL488-68133**

## Basic Information

<b>Catalog Number:</b> CL488-68133	<b>GenBank Accession Number:</b> BC114340	<b>Purification Method:</b> Protein G purification
<b>Size:</b> 100ul , Concentration: 1000 µg/ml by Nanodrop;	<b>GeneID (NCBI):</b> 5321	<b>CloneNo.:</b> 2D10H8
<b>Source:</b> Mouse	<b>Full Name:</b> phospholipase A2, group IVA (cytosolic, calcium-dependent)	<b>Recommended Dilutions:</b> IF 1:50-1:500
<b>Isotype:</b> IgG1	<b>Calculated MW:</b> 749 aa, 85 kDa	<b>Excitation/Emission maxima wavelengths:</b> 493 nm / 522 nm
<b>Immunogen Catalog Number:</b> AG32674	<b>Observed MW:</b> 85-100 kDa	

## Applications

<b>Tested Applications:</b> IF	<b>Positive Controls:</b> IF : HeLa cells,
<b>Species Specificity:</b> Human	

## Background Information

PLA2G4A, also named cPLA2 (cytosolic phospholipase A2), is a highly conserved and widely expressed enzyme that can promote lipid mediator production. It is present in the cytosol of resting cells and upon activation by a variety of agonists, undergoes Ca<sup>++</sup>-directed translocation to perinuclear membranes. PLA2G4A plays a major role in membrane lipid remodeling and biosynthesis of lipid mediators of the inflammatory response. It has been reported that the activity and expression levels of PLA2G4A are upregulated in several neurodegenerative diseases. It is a 749 amino acid, 85 kDa protein that migrates at 100-112 kDa in polyacrylamide gels (PMID: 17459165).

## Storage

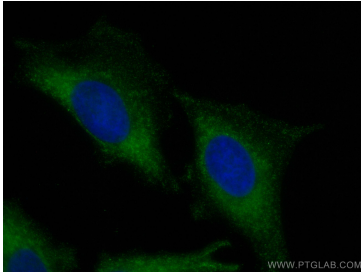
**Storage:**  
Store at -20°C. Avoid exposure to light. Stable for one year after shipment.  
**Storage Buffer:**  
PBS with 50% Glycerol, 0.05% Proclin300, 0.5% BSA, pH 7.3.  
Aliquoting is unnecessary for -20°C storage

\*\*\* 20ul sizes contain 0.1% BSA

For technical support and original validation data for this product please contact:  
T: 1 (888) 4PTGLAB (1-888-478-4522) (toll free in USA), or 1(312) 455-8498 (outside USA)      E: [proteintech@ptglab.com](mailto:proteintech@ptglab.com)  
W: [ptglab.com](http://ptglab.com)

This product is exclusively available under Proteintech Group brand and is not available to purchase from any other manufacturer.

## Selected Validation Data



Immunofluorescent analysis of (-20°C Methanol) fixed HeLa cells using Coralite® Plus 488 PLA2G4A antibody (CL488-68133, Clone: 2D10H8) at dilution of 1:200.