

For Research Use Only

# CoraLite® Plus 488-conjugated ARPC2 Monoclonal antibody



Catalog Number:CL488-68145

## Basic Information

Catalog Number:

CL488-68145

Size:

100ul , Concentration: 1000 µg/ml by  
Nanodrop;

Source:

Mouse

Isotype:

IgG1

Immunogen Catalog Number:

AG7082

GenBank Accession Number:

BC000590

GeneID (NCBI):

10109

UNIPROT ID:

O15144

Full Name:

actin related protein 2/3 complex,  
subunit 2, 34kDa

Calculated MW:

34 kDa

Observed MW:

34 kDa

Purification Method:

Protein G purification

CloneNo.:

1D8E3

Recommended Dilutions:

IF 1:50-1:500

Excitation/Emission maxima

wavelengths:

493 nm / 522 nm

## Applications

Tested Applications:

IF, FC (Intra)

Species Specificity:

Human, mouse, rat

Positive Controls:

IF : HeLa cells,

## Storage

Storage:

Store at -20°C. Avoid exposure to light. Stable for one year after shipment.

Storage Buffer:

PBS with 50% Glycerol, 0.05% Proclin300, 0.5% BSA, pH 7.3.

Aliquoting is unnecessary for -20°C storage

\*\*\* 20ul sizes contain 0.1% BSA

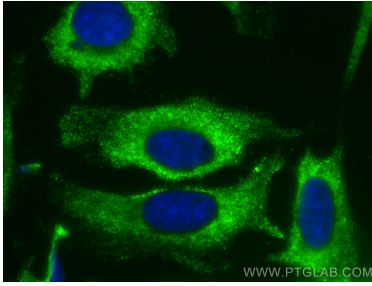
For technical support and original validation data for this product please contact:

T: 1 (888) 4PTGLAB (1-888-478-4522) (toll free  
in USA), or 1(312) 455-8498 (outside USA)

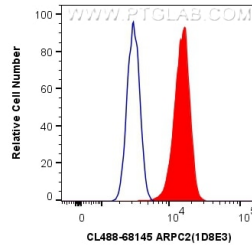
E: [proteintech@ptglab.com](mailto:proteintech@ptglab.com)  
W: [ptglab.com](http://ptglab.com)

This product is exclusively available under Proteintech  
Group brand and is not available to purchase from any  
other manufacturer.

## Selected Validation Data



Immunofluorescent analysis of (-20°C Methanol) fixed HeLa cells using CoraLite® Plus 488 ARPC2 antibody (CL488-68145, Clone: 1D8E3) at dilution of 1:200.



1X10<sup>6</sup> HeLa cells were intracellularly stained with 0.8 ug CoraLite® Plus 488 Anti-Human ARPC2 (CL488-68145, Clone:1D8E3) (red), or 0.8 ug CoraLite® Plus 488 Mouse IgG1 Isotype Control (MOPC-21) (CL488-65124, Clone: MOPC-21) (blue). Cells were fixed with 4% PFA and permeabilized with Flow Cytometry Perm Buffer (PF00011-C).