

For Research Use Only

CoraLite® Plus 488-conjugated HBS1L Monoclonal antibody

Catalog Number: CL488-68146



Basic Information

Catalog Number: CL488-68146	GenBank Accession Number: BC001465	Purification Method: Protein G purification
Size: 100ul , Concentration: 1000 ug/ml by Nanodrop;	GeneID (NCBI): 10767	CloneNo.: 1A10C4
Source: Mouse	UNIPROT ID: Q9Y450	Recommended Dilutions: IF/ICC 1:50-1:500
Isotype: IgG1	Full Name: HBS1-like (S. cerevisiae)	Excitation/Emission maxima wavelengths: 493 nm / 522 nm
Immunogen Catalog Number: AG0388	Calculated MW: 75 kDa	
	Observed MW: 75 kDa	

Applications

Tested Applications: IF/ICC	Positive Controls: IF/ICC : U2OS cells,
Species Specificity: Human	

Background Information

HBS1L (HBS1-like), also known as EF-1a or ERFS, is a 684 amino acid protein that belongs to the GTP-binding elongation factor family and exists as multiple alternatively spliced isoforms. Expressed in kidney, brain, heart, placenta, liver, muscle and pancreas, HSB1L is thought to play a role in controlling fetal hemoglobin levels, specifically influencing platelet, monocyte and erythrocyte hemoglobin content. The gene encoding HBS1L maps to a locus on human chromosome 6 that is associated with sickle cell anemia and beta-thalassemia, suggesting a role for HBS1L in the pathogenesis of blood disorders. This antibody specifically recognizes the 75kd human HBS1L protein.

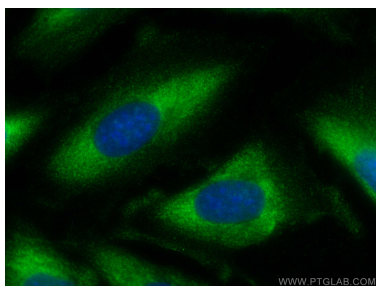
Storage

Storage:
Store at -20°C. Avoid exposure to light. Stable for one year after shipment.
Storage Buffer:
PBS with 50% Glycerol, 0.05% Proclin300, 0.5% BSA, pH 7.3.
Aliquoting is unnecessary for -20°C storage

For technical support and original validation data for this product please contact:
T: 1 (888) 4PTGLAB (1-888-478-4522) (toll free in USA), or 1(312) 455-8498 (outside USA)
E: proteintech@ptglab.com
W: ptglab.com

This product is exclusively available under Proteintech Group brand and is not available to purchase from any other manufacturer.

Selected Validation Data



Immunofluorescent analysis of (-20°C Ethanol) fixed U2OS cells using CoraLite® Plus 488 HBS1L antibody (CL488-68146, Clone: 1A10C4) at dilution of 1:100.