

For Research Use Only

CoraLite® Plus 488-conjugated ENO3 Monoclonal antibody

Catalog Number: CL488-68147



Basic Information

Catalog Number:

CL488-68147

Size:

100ul , Concentration: 1000 ug/ml by Nanodrop;

Source:

Mouse

Isotype:

IgG2b

Immunogen Catalog Number:

AG9642

GenBank Accession Number:

BC017249

GeneID (NCBI):

2027

UNIPROT ID:

P13929

Full Name:

enolase 3 (beta, muscle)

Calculated MW:

434 aa, 47 kDa

Observed MW:

42-47 kDa

Purification Method:

Protein A purification

CloneNo.:

2C12G3

Recommended Dilutions:

IF/ICC 1:50-1:500

Excitation/Emission maxima wavelengths:

493 nm / 522 nm

Applications

Tested Applications:

IF/ICC

Species Specificity:

Human, Mouse, Rat, Pig

Positive Controls:

IF/ICC : HeLa cells,

Background Information

Enolase 3 (ENO3) encodes the β -subunit of enolase, which is distributed in various tissues, including liver, lung, skeletal, and heart. ENO3 plays an important role in both glycogen and cholesterol metabolism. It has been demonstrated that ENO3 deficiency may lead to metabolic myopathies, and ENO3 speeds up hepatic cholesterol ester cumulation induced via the mediation of cholesteryl ester generation. Apart from these, ENO3 has also been involved in various tumors, though the results are contradictory. For example, ENO3 is up-regulated in STK11 mutant pulmonary carcinoma and colorectal carcinoma, while down-regulated in pancreatic cancer and hepatocellular carcinomas. ENO3 has 3 isoforms with the molecular mass of 42-47 kDa. (PMID: 33987359, 35004693)

Storage

Storage:

Store at -20°C. Avoid exposure to light. Stable for one year after shipment.

Storage Buffer:

PBS with 50% Glycerol, 0.05% Proclin300, 0.5% BSA, pH 7.3.

Aliquoting is unnecessary for -20°C storage

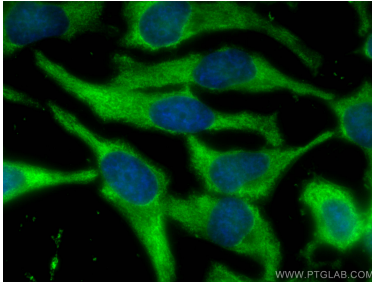
For technical support and original validation data for this product please contact:

T: 1 (888) 4PTGLAB (1-888-478-4522) (toll free in USA), or 1(312) 455-8498 (outside USA)

E: proteintech@ptglab.com
W: ptglab.com

This product is exclusively available under Proteintech Group brand and is not available to purchase from any other manufacturer.

Selected Validation Data



Immunofluorescent analysis of (-20°C Ethanol) fixed HeLa cells using Coralite® Plus 488 ENO3 antibody (CL488-68147, Clone: 2C12G3) at dilution of 1:200.