

For Research Use Only

CoraLite® Plus 488-conjugated EEF1G Monoclonal antibody



Catalog Number: CL488-68148

Basic Information

Catalog Number: CL488-68148	GenBank Accession Number: BC006520	Purification Method: Protein A purification
Size: 100ul , Concentration: 1000 µg/ml by Nanodrop;	GeneID (NCBI): 1937	CloneNo.: 1G7C6
Source: Mouse	Full Name: eukaryotic translation elongation factor 1 gamma	Recommended Dilutions: IF 1:50-1:500
Isotype: IgG2b	Calculated MW: 50 kDa	Excitation/Emission maxima wavelengths: 493 nm / 522 nm
Immunogen Catalog Number: AG0218	Observed MW: 50 kDa	

Applications

Tested Applications:

IF

Species Specificity:

Human, Pig, Rabbit

Positive Controls:

IF : HeLa cells,

Background Information

Eukaryotic translation elongation factor 1 (EEF1G, synonym: EF1G) is a subunit of the elongation factor-1 complex, which is responsible for the enzymatic delivery of aminoacyl tRNAs to the ribosome. This subunit contains an N-terminal glutathione transferase domain, which may be involved in regulating the assembly of multisubunit complexes containing this elongation factor and aminoacyl-tRNA synthetases.

Storage

Storage:

Store at -20°C. Avoid exposure to light. Stable for one year after shipment.

Storage Buffer:

PBS with 50% Glycerol, 0.05% Proclin300, 0.5% BSA, pH 7.3.

Aliquoting is unnecessary for -20°C storage

***** 20ul sizes contain 0.1% BSA**

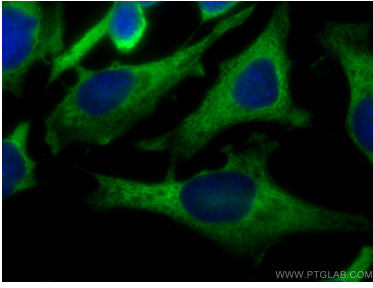
For technical support and original validation data for this product please contact:

T: 1 (888) 4PTGLAB (1-888-478-4522) (toll free
in USA), or 1(312) 455-8498 (outside USA)

E: proteintech@ptglab.com
W: ptglab.com

This product is exclusively available under Proteintech Group brand and is not available to purchase from any other manufacturer.

Selected Validation Data



Immunofluorescent analysis of (-20°C Ethanol) fixed HeLa cells using CoraLite® Plus 488 EEF1G antibody (CL488-68148, Clone: 1G7C6) at dilution of 1:200.