

For Research Use Only

CoraLite® Plus 488-conjugated LANCL1 Monoclonal antibody

Catalog Number: CL488-68160



Basic Information

Catalog Number: CL488-68160	GenBank Accession Number: BC028685	Purification Method: Protein G purification
Size: 100ul , Concentration: 1000 ug/ml by Nanodrop;	GeneID (NCBI): 10314	CloneNo.: 2H6E8
Source: Mouse	UNIPROT ID: O43813	Recommended Dilutions: IF/ICC 1:50-1:500
Isotype: IgG1	Full Name: LanC lantibiotic synthetase component C-like 1 (bacterial)	Excitation/Emission maxima wavelengths: 493 nm / 522 nm
Immunogen Catalog Number: AG32665	Calculated MW: 399 aa, 45 kDa	
	Observed MW: 40 kDa	

Applications

Tested Applications: IF/ICC	Positive Controls: IF/ICC : U-251 cells,
Species Specificity: Human, mouse, rat, pig	

Background Information

LanCL1 (also known as P40 or GRP69A), is homologous to bacterial lanthionine synthetase C (LanC) family, which is involved in the biosynthesis of antimicrobial peptides (lantibiotics). LanCL1 was identified as a reduced glutathione (GSH)-binding protein and primarily expressed in neural tissues and testis.

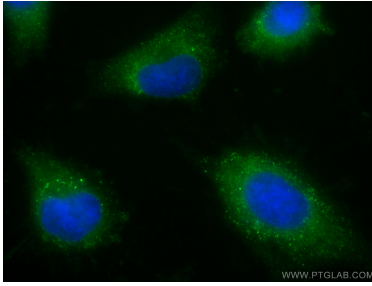
Storage

Storage:
Store at -20°C. Avoid exposure to light. Stable for one year after shipment.
Storage Buffer:
PBS with 50% Glycerol, 0.05% Proclin300, 0.5% BSA, pH 7.3.
Aliquoting is unnecessary for -20°C storage

For technical support and original validation data for this product please contact:
T: 1 (888) 4PTGLAB (1-888-478-4522) (toll free in USA), or 1(312) 455-8498 (outside USA)
E: proteintech@ptglab.com
W: ptglab.com

This product is exclusively available under Proteintech Group brand and is not available to purchase from any other manufacturer.

Selected Validation Data



Immunofluorescent analysis of (-20°C Ethanol) fixed U-251 cells using CoraLite® Plus 488 LANCL1 antibody (CL488-68160, Clone: 2H6E8) at dilution of 1:200.