

For Research Use Only

CoraLite® Plus 488-conjugated NIT2 Monoclonal antibody

Catalog Number:CL488-68169



Basic Information

Catalog Number:

CL488-68169

Size:

100ul , Concentration: 1000 ug/ml by Nanodrop;

Source:

Mouse

Isotype:

IgG2b

Immunogen Catalog Number:

AG9889

GenBank Accession Number:

BC020620

GeneID (NCBI):

56954

UNIPROT ID:

Q9NQR4

Full Name:

nitrilase family, member 2

Calculated MW:

276 aa, 31 kDa

Observed MW:

31 kDa

Purification Method:

Protein A purification

CloneNo.:

1E5B1

Recommended Dilutions:

IF/ICC 1:50-1:500

Excitation/Emission maxima wavelengths:

493 nm / 522 nm

Applications

Tested Applications:

IF/ICC

Species Specificity:

Human, mouse, rat, pig

Positive Controls:

IF/ICC : U-251 cells,

Background Information

NIT2 belongs to a branch of the nitrilase superfamily of enzymes that cleave carbon-nitrogen bonds. NIT2 functions as an omega-amidase and catalyzes hydrolysis of alpha-ketoglutaramate, forming alpha-ketoglutarate and ammonia. This reaction is also functionally coupled with a subset of transaminases that reaminate the keto acid analogs of some essential amino acids, most particularly methionine and phenylalanine.

Storage

Storage:

Store at -20°C. Avoid exposure to light. Stable for one year after shipment.

Storage Buffer:

PBS with 50% Glycerol, 0.05% Proclin300, 0.5% BSA, pH 7.3.

Aliquoting is unnecessary for -20°C storage

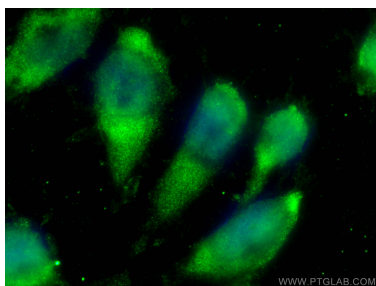
For technical support and original validation data for this product please contact:

T: 1 (888) 4PTGLAB (1-888-478-4522) (toll free in USA), or 1(312) 455-8498 (outside USA)

E: proteintech@ptglab.com
W: ptglab.com

This product is exclusively available under Proteintech Group brand and is not available to purchase from any other manufacturer.

Selected Validation Data



Immunofluorescent analysis of (-20°C Ethanol) fixed U-251 cells using CoraLite® Plus 488 NIT2 antibody (CL488-68169, Clone: 1E5B1) at dilution of 1:200.