

For Research Use Only

CoraLite® Plus 488-conjugated PPA1 Monoclonal antibody

Catalog Number:CL488-68178



Basic Information

Catalog Number:	GenBank Accession Number:	Purification Method:
CL488-68178	BC001022	Protein G purification
Size:	GeneID (NCBI):	CloneNo.:
100ul , Concentration: 1000 ug/ml by Nanodrop;	5464	1D11F4
Source:	UNIPROT ID:	Recommended Dilutions:
Mouse	Q15181	IF/ICC 1:50-1:500
Isotype:	Full Name:	Excitation/Emission maxima wavelengths:
IgG1	pyrophosphatase (inorganic) 1	493 nm / 522 nm
Immunogen Catalog Number:	Calculated MW:	
AG7049	33 kDa	
	Observed MW:	
	33 kDa	

Applications

Tested Applications:	Positive Controls:
IF/ICC	IF/ICC : HeLa cells,
Species Specificity:	
human, rat	

Background Information

PPA1(Inorganic pyrophosphatase) is also named as IOPPP, PP and PPase. It maintains the thermodynamic favorability of these reactions by catalyzing the hydrolysis of pyrophosphates into organic phosphates, which are then exported across the cell membrane(PMID:16300924).The erythrocyte inorganic pyrophosphatase molecule would appear to be a dimer(PMID:4130389).

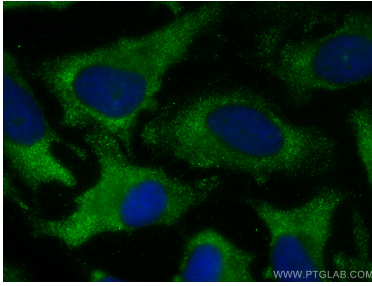
Storage

Storage:
Store at -20°C. Avoid exposure to light. Stable for one year after shipment.
Storage Buffer:
PBS with 50% Glycerol, 0.05% Proclin300, 0.5% BSA, pH 7.3.
Aliquoting is unnecessary for -20°C storage

For technical support and original validation data for this product please contact:
T: 1 (888) 4PTGLAB (1-888-478-4522) (toll free in USA), or 1(312) 455-8498 (outside USA)
E: proteintech@ptglab.com
W: ptglab.com

This product is exclusively available under Proteintech Group brand and is not available to purchase from any other manufacturer.

Selected Validation Data



Immunofluorescent analysis of (-20°C Methanol) fixed HeLa cells using CoraLite® Plus 488 PPA1 antibody (CL488-68178, Clone: 1D11F4) at dilution of 1:100.