

For Research Use Only

CoraLite® Plus 488-conjugated PSMB2 Monoclonal antibody

Catalog Number: CL488-68180

Featured Product



Basic Information

Catalog Number:

CL488-68180

Size:

100ul , Concentration: 1000 ug/ml by Nanodrop;

Source:

Mouse

Isotype:

IgG1

Immunogen Catalog Number:

AG7308

GenBank Accession Number:

BC000268

GeneID (NCBI):

5690

UNIPROT ID:

P49721

Full Name:

proteasome (prosome, macropain) subunit, beta type, 2

Calculated MW:

23 kDa

Observed MW:

23 kDa

Purification Method:

Protein G purification

CloneNo.:

3C5C5

Recommended Dilutions:

IF/ICC 1:50-1:500

Excitation/Emission maxima wavelengths:

493 nm / 522 nm

Applications

Tested Applications:

IF/ICC, FC (Intra)

Species Specificity:

human

Positive Controls:

IF/ICC : HepG2 cells, PC-3 cells

Background Information

PSMB2(proteasome subunit beta type-2) is also named as macropain subunit C7-I, proteasome component C7-I, multicatalytic endopeptidase complex subunit C7-I and belongs to the peptidase T1B family. It is involved in an ATP/ubiquitin-dependent non-lysosomal proteolytic pathway. The up-regulation of PSMB2 may indicate the activated neuronal defensive mechanism in VAD(vitamin A depletion) brain regions, which may underlie the VAD-related psychosis behavior(PMID:21190828).

Storage

Storage:

Store at -20°C. Avoid exposure to light. Stable for one year after shipment.

Storage Buffer:

PBS with 50% Glycerol, 0.05% Proclin300, 0.5% BSA, pH 7.3.

Aliquoting is unnecessary for -20°C storage

For technical support and original validation data for this product please contact:

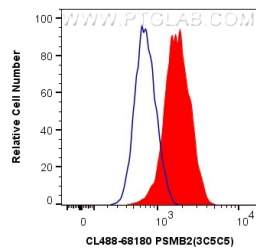
T: 1 (888) 4PTGLAB (1-888-478-4522) (toll free in USA), or 1(312) 455-8498 (outside USA)

E: proteintech@ptglab.com

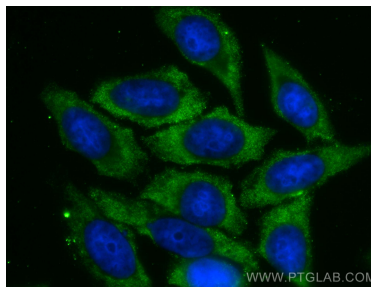
W: ptglab.com

This product is exclusively available under Proteintech Group brand and is not available to purchase from any other manufacturer.

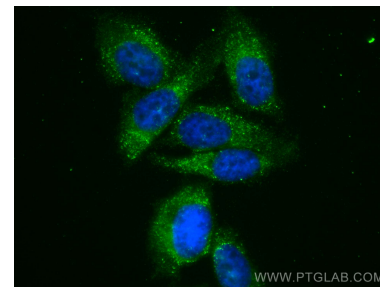
Selected Validation Data



1X10⁶ Jurkat cells were intracellularly stained with 0.8 ug CoraLite® Plus 488 Anti-Human PSMB2 (CL488-68180, Clone:3C5C5) (red), or 0.8 ug Control Antibody. Cells were fixed with 4% PFA and permeabilized with Flow Cytometry Perm Buffer (PF00011-C).



Immunofluorescent analysis of (-20°C Ethanol) fixed HepG2 cells using CoraLite® Plus 488 PSMB2 antibody (CL488-68180, Clone: 3C5C5) at dilution of 1:200.



Immunofluorescent analysis of (4% PFA) fixed PC-3 cells using CoraLite® Plus 488 PSMB2 antibody (CL488-68180, Clone: 3C5C5) at dilution of 1:200.