

For Research Use Only

CoraLite® Plus 488-conjugated TCP1 Monoclonal antibody



Catalog Number: **CL488-68183**

Basic Information

Catalog Number: CL488-68183	GenBank Accession Number: BC000665	Purification Method: Protein G purification
Size: 100ul , Concentration: 1000 µg/ml by Nanodrop;	GeneID (NCBI): 6950	CloneNo.: 2C2F6
Source: Mouse	Full Name: t-complex 1	Recommended Dilutions: IF 1:50-1:500
Isotype: IgG1	Calculated MW: 60 kDa	Excitation/Emission maxima wavelengths: 493 nm / 522 nm
Immunogen Catalog Number: AG0389	Observed MW: 55-60 kDa	

Applications

Tested Applications: IF	Positive Controls: IF : HeLa cells,
Species Specificity: Human	

Background Information

Storage

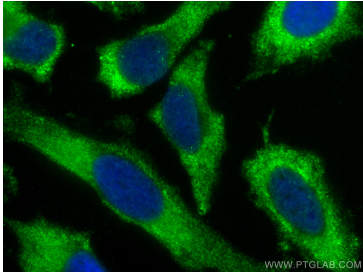
Storage:
Store at -20°C. Avoid exposure to light. Stable for one year after shipment.
Storage Buffer:
PBS with 50% Glycerol, 0.05% Proclin300, 0.5% BSA, pH 7.3.
Aliquoting is unnecessary for -20°C storage

***** 20ul sizes contain 0.1% BSA**

For technical support and original validation data for this product please contact:
T: 1 (888) 4PTGLAB (1-888-478-4522) (toll free in USA), or 1(312) 455-8498 (outside USA)
E: proteintech@ptglab.com
W: ptglab.com

This product is exclusively available under Proteintech Group brand and is not available to purchase from any other manufacturer.

Selected Validation Data



Immunofluorescent analysis of (-20°C Methanol) fixed HeLa cells using CoraLite® Plus 488 TCP1 antibody (CL488-68183, Clone: 2C2F6) at dilution of 1:200.