

For Research Use Only

CoraLite® Plus 488-conjugated ARL8A/ARL8B Monoclonal antibody

Catalog Number: CL488-68186



Basic Information

Catalog Number: CL488-68186	GenBank Accession Number: BC015408	Purification Method: Protein A purification
Size: 100ul , Concentration: 1000 ug/ml by Nanodrop;	GeneID (NCBI): 127829	CloneNo.: 2F4C3
Source: Mouse	UNIPROT ID: Q96BM9	Recommended Dilutions: IF/ICC 1:50-1:500
Isotype: IgG2a	Full Name: ADP-ribosylation factor-like 8A	Excitation/Emission maxima wavelengths: 493 nm / 522 nm
Immunogen Catalog Number: AG10758	Calculated MW: 186 aa, 21 kDa	
	Observed MW: 18 kDa, 21 kDa	

Applications

Tested Applications: IF/ICC	Positive Controls: IF/ICC : HEK-293 cells, Neuro-2a cells, A549 cells
Species Specificity: human, mouse, rat, rabbit	

Background Information

ARL8A (ADP-ribosylation factor-like protein 8A) is also named as ARL10B, GIE2 and belongs to the small GTPase superfamily. ARL8A is localized to lysosomes in mammalian cells (PMID: 16537643). In neurons, ARL8A mediates the anterograde axonal long-range transport of presynaptic lysosome-related vesicles that are required for presynaptic biogenesis and synaptic function. ARL8A is upregulated in many cancers such as endometrial cancer (PMID: 32070877), colorectal cancer (PMID: 30546056) and inflammatory breast cancer (PMID: 27648361), and has been associated with poor survival outcomes. ARL8A/ARL8B can be recognized by this antibody.

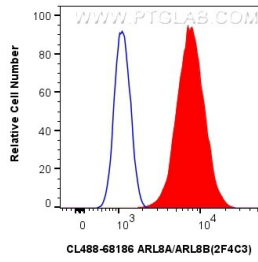
Storage

Storage:
Store at -20°C. Avoid exposure to light. Stable for one year after shipment.
Storage Buffer:
PBS with 50% Glycerol, 0.05% Proclin300, 0.5% BSA, pH 7.3.
Aliquoting is unnecessary for -20°C storage

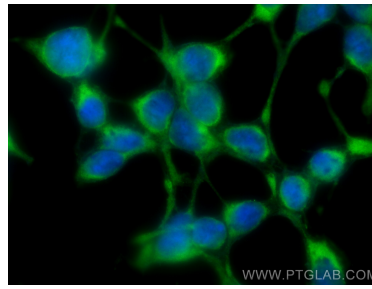
For technical support and original validation data for this product please contact:
T: 1 (888) 4PTGLAB (1-888-478-4522) (toll free in USA), or 1(312) 455-8498 (outside USA)
E: proteintech@ptglab.com
W: ptglab.com

This product is exclusively available under Proteintech Group brand and is not available to purchase from any other manufacturer.

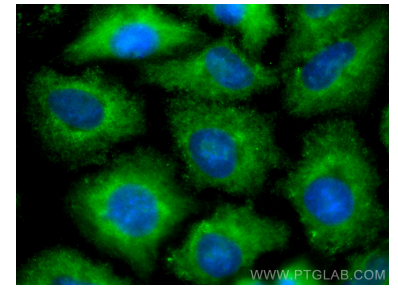
Selected Validation Data



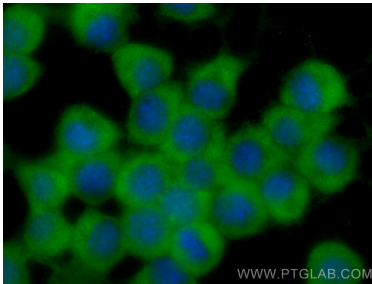
1x10⁶ C6 cells were intracellularly stained with 0.4 ug CoraLite® Plus 488 ARL8a/ARL8b Monoclonal Antibody (CL488-68186, Clone:2F4C3)(red), or 0.4 ug Isotype Control (CL488-66360-2) (blue). Cells were fixed with 4% PFA and permeabilized with Flow Cytometry Perm Buffer (PF00011-C).



Immunofluorescent analysis of (-20°C Ethanol) fixed HEK-293 cells using CoraLite® Plus 488 ARL8A/ARL8B antibody (CL488-68186, Clone: 2F4C3) at dilution of 1:200.



Immunofluorescent analysis of (-20°C Methanol) fixed A549 cells using CoraLite® Plus 488 ARL8A/ARL8B antibody (CL488-68186, Clone: 2F4C3) at dilution of 1:200.



Immunofluorescent analysis of (-20°C Ethanol) fixed Neuro-2a cells using CoraLite® Plus 488 ARL8A/ARL8B antibody (CL488-68186, Clone: 2F4C3) at dilution of 1:200.