

For Research Use Only

CoraLite® Plus 488-conjugated VPS25 Monoclonal antibody

Catalog Number: CL488-68197



Basic Information

Catalog Number:

CL488-68197

Size:

100ul, Concentration: 1000 ug/ml by Nanodrop;

Source:

Mouse

Isotype:

IgG1

Immunogen Catalog Number:

AG8243

GenBank Accession Number:

BC006282

GeneID (NCBI):

84313

UNIPROT ID:

Q9BRG1

Full Name:

vacuolar protein sorting 25 homolog (S. cerevisiae)

Calculated MW:

176 aa, 21 kDa

Observed MW:

19 kDa

Purification Method:

Protein G purification

CloneNo.:

3B4C3

Recommended Dilutions:

IF/ICC 1:50-1:500

Excitation/Emission maxima wavelengths:

493 nm / 522 nm

Applications

Tested Applications:

IF/ICC

Species Specificity:

Human, Rabbit

Positive Controls:

IF/ICC : HepG2 cells,

Background Information

VPS25 is a component of the endosome-associated complex ESCRT-II (Endosomal Sorting Complexes Required for Transport protein II). ESCRT-II complex, composed of VPS25, VPS36, and SNF8, functions in sorting of ubiquitinated membrane proteins during endocytosis. ESCRT-II complex is probably involved in the recruitment of the ESCRT-III complex. VPS25 is highly conserved. Human VPS25 gene maps to chromosome 17q21.31 and is expressed in a wide range of tissues (PMID: 16889659).

Storage

Storage:

Store at -20°C. Avoid exposure to light. Stable for one year after shipment.

Storage Buffer:

PBS with 50% Glycerol, 0.05% Proclin300, 0.5% BSA, pH 7.3.

Aliquoting is unnecessary for -20°C storage

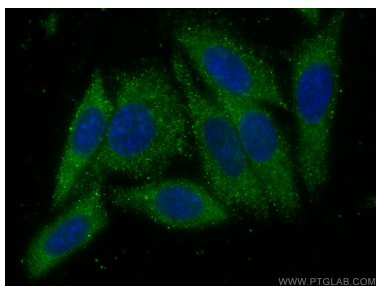
For technical support and original validation data for this product please contact:

T: 1 (888) 4PTGLAB (1-888-478-4522) (toll free in USA), or 1(312) 455-8498 (outside USA)

E: proteintech@ptglab.com
W: ptglab.com

This product is exclusively available under Proteintech Group brand and is not available to purchase from any other manufacturer.

Selected Validation Data



Immunofluorescent analysis of (-20°C Ethanol) fixed HepG2 cells using CoraLite® Plus 488 VPS25 antibody (CL488-68197, Clone: 3B4C3) at dilution of 1:200.