

For Research Use Only

CoraLite® Plus 488-conjugated LETM1 Monoclonal antibody



Catalog Number: CL488-68208

Featured Product

Basic Information

Catalog Number: CL488-68208	GenBank Accession Number: BC021208	Purification Method: Protein G purification
Size: 100ul , Concentration: 1000 µg/ml by Nanodrop;	GeneID (NCBI): 3954	CloneNo.: 2B9B9
Source: Mouse	Full Name: leucine zipper-EF-hand containing transmembrane protein 1	Recommended Dilutions: IF 1:50-1:500
Isotype: IgG1	Calculated MW: 739 aa, 83 kDa	Excitation/Emission maxima wavelengths: 493 nm / 522 nm
Immunogen Catalog Number: AG8851	Observed MW: 83 kDa	

Applications

Tested Applications: IF	Positive Controls: IF : HeLa cells,
Species Specificity: Human, rat	

Background Information

LETM1 is a mitochondrial inner membrane protein. It functions to maintain the mitochondrial tubular shapes and is required for normal mitochondrial morphology and cellular viability. It served as an anchor protein for complex formation between mitochondria and ribosome, and regulated mitochondrial biogenesis. It was also identified in Wolf-Hirschhorn syndrome, and was deleted in nearly all patients with the syndrome. A recent study determined that adenovirus-mediated LETM1 may provide a useful target for designing lung tumor prevention and treatment.

Storage

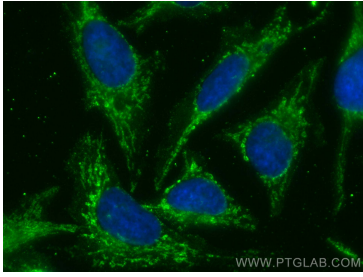
Storage:
Store at -20°C. Avoid exposure to light. Stable for one year after shipment.
Storage Buffer:
PBS with 50% Glycerol, 0.05% Proclin300, 0.5% BSA, pH 7.3.
Aliquoting is unnecessary for -20°C storage

*** 20ul sizes contain 0.1% BSA

For technical support and original validation data for this product please contact:
T: 1 (888) 4PTGLAB (1-888-478-4522) (toll free in USA), or 1(312) 455-8498 (outside USA) E: proteintech@ptglab.com W: ptglab.com

This product is exclusively available under Proteintech Group brand and is not available to purchase from any other manufacturer.

Selected Validation Data



Immunofluorescent analysis of (-20°C Methanol) fixed HeLa cells using CoraLite® Plus 488 LETM1 antibody (CL488-68208, Clone: 2B9B9) at dilution of 1:200.