

For Research Use Only

# CoraLite® Plus 488-conjugated NF90/ILF3 Monoclonal antibody

Catalog Number:CL488-68213



## Basic Information

Catalog Number:

CL488-68213

Size:

100ul , Concentration: 1000 ug/ml by  
Nanodrop;

Source:

Mouse

Isotype:

IgG1

Immunogen Catalog Number:

AG30868

GenBank Accession Number:

BC064836

GeneID (NCBI):

3609

UNIPROT ID:

Q12906

Full Name:

interleukin enhancer binding factor 3,  
90kDa

Calculated MW:

894 aa, 95 kDa

Observed MW:

90 kDa, 110 kDa

Purification Method:

Protein G purification

CloneNo.:

2H10G3

Recommended Dilutions:

IF/ICC 1:50-1:500

Excitation/Emission maxima

wavelengths:

493 nm / 522 nm

## Applications

Tested Applications:

IF/ICC

Species Specificity:

human, mouse, rat

Positive Controls:

IF/ICC : A431 cells,

## Storage

Storage:

Store at -20°C. Avoid exposure to light. Stable for one year after shipment.

Storage Buffer:

PBS with 50% Glycerol, 0.05% Proclin300, 0.5% BSA, pH 7.3.

Aliquoting is unnecessary for -20°C storage

For technical support and original validation data for this product please contact:

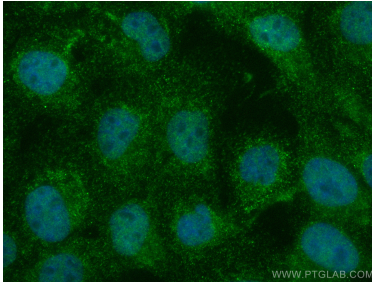
T: 1 (888) 4PTGLAB (1-888-478-4522) (toll free  
in USA), or 1(312) 455-8498 (outside USA)

E: [proteintech@ptglab.com](mailto:proteintech@ptglab.com)  
W: [ptglab.com](http://ptglab.com)

This product is exclusively available under Proteintech  
Group brand and is not available to purchase from any  
other manufacturer.

---

## Selected Validation Data



Immunofluorescent analysis of (4% PFA) fixed A431 cells using CoraLite® Plus 488 NF90/ILF3 antibody (CL488-68213, Clone: 2H10G3 ) at dilution of 1:200.