

For Research Use Only

# CoraLite® Plus 488-conjugated ATP6V1B1 Monoclonal antibody



Catalog Number:CL488-68219

## Basic Information

<b>Catalog Number:</b> CL488-68219	<b>GenBank Accession Number:</b> BC063411	<b>Purification Method:</b> Protein G purification
<b>Size:</b> 100ul , Concentration: 1000 µg/ml by Nanodrop;	<b>GeneID (NCBI):</b> 525	<b>CloneNo.:</b> 1G10A8
<b>Source:</b> Mouse	<b>Full Name:</b> ATPase, H <sup>+</sup> transporting, lysosomal 56/58kDa, V1 subunit B1	<b>Recommended Dilutions:</b> IF 1:50-1:500
<b>Isotype:</b> IgG1	<b>Calculated MW:</b> 57 kDa	<b>Excitation/Emission maxima wavelengths:</b> 493 nm / 522 nm
<b>Immunogen Catalog Number:</b> AG7405	<b>Observed MW:</b> 56 kDa	

## Applications

<b>Tested Applications:</b> IF	<b>Positive Controls:</b> IF : HEK-293 cells,
<b>Species Specificity:</b> Human, Mouse, Rat, Rabbit, Pig	

## Background Information

ATP6V1B1, also named ATP6B1, VATB and VPP3, belongs to the ATPase alpha/beta chains family. ATP6V1B1 is mainly expressed in kidney. ATP6V1B1 is essential for the proper assembly and activity of V-ATPase. In renal intercalated cells, ATP6V1B1 mediates secretion of protons (H<sup>+</sup>) into the urine thereby ensuring correct urinary acidification. The calculated molecular weight of ATP6V1B1 is 57 kDa.

## Storage

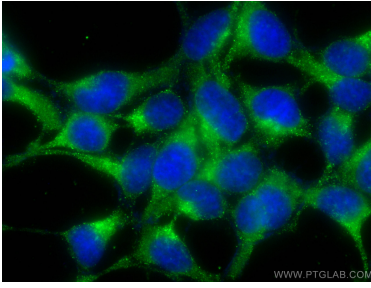
**Storage:**  
Store at -20°C. Avoid exposure to light. Stable for one year after shipment.  
**Storage Buffer:**  
PBS with 50% Glycerol, 0.05% Proclin300, 0.5% BSA, pH 7.3.  
Aliquoting is unnecessary for -20°C storage

\*\*\* 20ul sizes contain 0.1% BSA

For technical support and original validation data for this product please contact:  
T: 1 (888) 4PTGLAB (1-888-478-4522) (toll free in USA), or 1(312) 455-8498 (outside USA)  
E: proteintech@ptglab.com  
W: ptglab.com

This product is exclusively available under Proteintech Group brand and is not available to purchase from any other manufacturer.

## Selected Validation Data



Immunofluorescent analysis of (-20°C Ethanol)  
fixed HEK-293 cells using CoraLite® Plus 488  
ATP6V1B1 antibody (CL488-68219, Clone: 1G10A8 )  
at dilution of 1:100.