

For Research Use Only

CoraLite® Plus 488-conjugated CD59 Monoclonal antibody



Catalog Number: **CL488-68222**

Basic Information

Catalog Number: CL488-68222	GenBank Accession Number: BC001506	Purification Method: Protein A purification
Size: 100ul , Concentration: 1000 µg/ml by Nanodrop;	GeneID (NCBI): 966	CloneNo.: 1E3A1
Source: Mouse	Full Name: CD59 molecule, complement regulatory protein	Recommended Dilutions: IF 1:50-1:500
Isotype: IgG2b	Calculated MW: 19 kDa	Excitation/Emission maxima wavelengths: 493 nm / 522 nm
Immunogen Catalog Number: AG32834	Observed MW: 18-25 kDa	

Applications

Tested Applications: IF	Positive Controls: IF : human placenta tissue, BxPC-3 cells
Species Specificity: Human	

Background Information

CD59, also named as MIC11, MIN1, MIN2, MIN3, MSK21, M1RL, MAC1F, HRF20 and 1F5 antigen, is a cell surface molecule glycoprotein with MW 18-25 kDa. It acts as a determinant of proximal-distal cell identity. CD59 acts by binding to the C8 and/or C9 complements of the assembling membrane attack complex (MAC), thereby preventing incorporation of the multiple copies of C9 required for complete formation of the osmolytic pore. It is involved in signal transduction for T-cell activation complexed to a protein tyrosine kinase.

Storage

Storage:
Store at -20°C. Avoid exposure to light. Stable for one year after shipment.
Storage Buffer:
PBS with 50% Glycerol, 0.05% Proclin300, 0.5% BSA, pH 7.3.
Aliquoting is unnecessary for -20°C storage

*** 20ul sizes contain 0.1% BSA

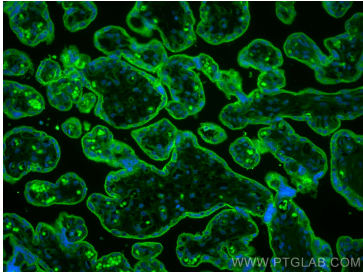
For technical support and original validation data for this product please contact:

T: 1 (888) 4PTGLAB (1-888-478-4522) (toll free
in USA), or 1(312) 455-8498 (outside USA)

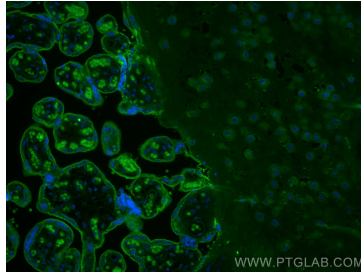
E: proteintech@ptglab.com
W: ptglab.com

This product is exclusively available under Proteintech Group brand and is not available to purchase from any other manufacturer.

Selected Validation Data



Immunofluorescent analysis of (4% PFA) fixed human placenta tissue using CoraLite® Plus 488 CD59 antibody (CL488-68222, Clone: 1E3A1) at dilution of 1:200.



Immunofluorescent analysis of (4% PFA) fixed human placenta tissue using CoraLite® Plus 488 CD59 antibody (CL488-68222, Clone: 1E3A1) at dilution of 1:200.