

For Research Use Only

CoraLite® Plus 488-conjugated CA12 Monoclonal antibody



Catalog Number: CL488-68224

Basic Information

Catalog Number:

CL488-68224

Size:

100ul, Concentration: 1000 µg/ml by
Nanodrop;

Source:

Mouse

Isotype:

IgG1

Immunogen Catalog Number:

AG7235

GenBank Accession Number:

BC000278

GeneID (NCBI):

771

UNIPROT ID:

O43570

Full Name:

carbonic anhydrase XII

Calculated MW:

39 kDa

Observed MW:

38-45 kDa

Purification Method:

Protein G purification

CloneNo.:

3E1D8

Recommended Dilutions:

IF 1:500-1:2000

Excitation/Emission maxima
wavelengths:

493 nm / 522 nm

Applications

Tested Applications:

IF

Species Specificity:

Human

Positive Controls:

IF : A549 cells,

Background Information

CA12 belongs to the alpha-carbonic anhydrase family. It reversible hydration of carbon dioxide. Overexpression of the zinc enzyme CA12 is observed in certain human cancers. The structure reveals a prototypical CA fold; however, two CA12 domains associate to form an isologous dimer, an observation that is confirmed by studies of the enzyme in solution.

Storage

Storage:

Store at -20°C. Avoid exposure to light. Stable for one year after shipment.

Storage Buffer:

PBS with 50% Glycerol, 0.05% Proclin300, 0.5% BSA, pH 7.3.

Aliquoting is unnecessary for -20°C storage

*** 20ul sizes contain 0.1% BSA

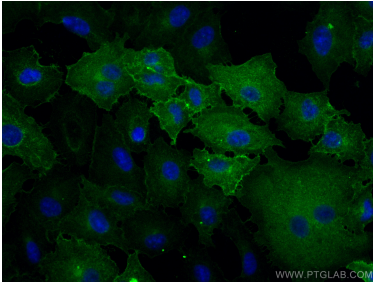
For technical support and original validation data for this product please contact:

T: 1 (888) 4PTGLAB (1-888-478-4522) (toll free
in USA), or 1(312) 455-8498 (outside USA)

E: proteintech@ptglab.com
W: ptglab.com

This product is exclusively available under Proteintech Group brand and is not available to purchase from any other manufacturer.

Selected Validation Data



Immunofluorescent analysis of (-20°C Methanol) fixed A549 cells using CoraLite® Plus 488 CA12 antibody (CL488-68224, Clone: 3E1D8) at dilution of 1:1000.