

For Research Use Only

CoraLite® Plus 488-conjugated GLO1 Monoclonal antibody

Catalog Number:CL488-68242



Basic Information

Catalog Number:

CL488-68242

GenBank Accession Number:

BC001741

Purification Method:

Protein A purification

Size:

100ul , Concentration: 1000 ug/ml by

Nanodrop;

GeneID (NCBI):

2739

CloneNo.:

1B7A8

Source:

Mouse

UNIPROT ID:

Q04760

Recommended Dilutions:

IF/ICC 1:50-1:500

Isotype:

IgG2a

Full Name:

glyoxalase I

Excitation/Emission maxima wavelengths:

493 nm / 522 nm

Immunogen Catalog Number:

AG7314

Calculated MW:

21 kDa

Observed MW:

21-25 kDa

Applications

Tested Applications:

IF/ICC, FC (Intra)

Positive Controls:

IF/ICC : HeLa cells,

Species Specificity:

human, mouse, rat

Background Information

Glo1 (glyoxalase I) is a cytosolic protein expressed in all mammalian cells. Its physiological function is the detoxification of MG (methylglyoxal), which is a potent precursor of AGEs (advanced glycation end-products). Glo1 is known to play a role in many diseases including diabetes mellitus, Alzheimer's disease, and cancer.

Storage

Storage:

Store at -20°C. Avoid exposure to light. Stable for one year after shipment.

Storage Buffer:

PBS with 50% Glycerol, 0.05% Proclin300, 0.5% BSA, pH 7.3.

Aliquoting is unnecessary for -20°C storage

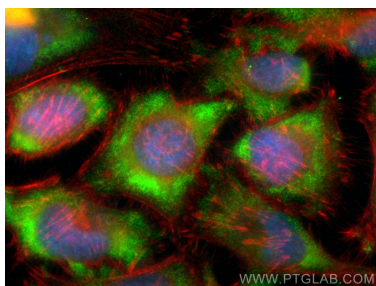
For technical support and original validation data for this product please contact:

T: 1 (888) 4PTGLAB (1-888-478-4522) (toll free in USA), or 1(312) 455-8498 (outside USA)

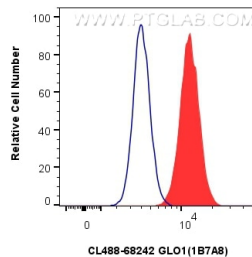
E: proteintech@ptglab.com
W: ptglab.com

This product is exclusively available under Proteintech Group brand and is not available to purchase from any other manufacturer.

Selected Validation Data



Immunofluorescent analysis of (-20°C Ethanol) fixed HeLa cells using CoraLite® Plus 488 GLO1 antibody (CL488-68242, Clone: 1B7A8) at dilution of 1:200, CL594-Phalloidin (red).



1x10⁶ HeLa cells were intracellularly stained with 0.4 ug CoraLite® Plus 488 Glo1 Monoclonal Antibody (CL488-68242, Clone:1B7A8)(red), or 0.4 ug CoraLite® Plus 488 Mouse IgG2a Isotype Control (C1.18.4) (CL488-65208, Clone: C1.18.4) (blue). Cells were fixed with 4% PFA and permeabilized with Flow Cytometry Perm Buffer (PF00011-C).