

For Research Use Only

# CoraLite® Plus 488-conjugated ABL1 Monoclonal antibody

Catalog Number: CL488-68254



## Basic Information

|  |   |   |
|--|---|---|
| <b>Catalog Number:</b><br>CL488-68254                          | <b>GenBank Accession Number:</b><br>NM_005157                   | <b>Purification Method:</b><br>Protein A purification             |
| <b>Size:</b><br>100ul , Concentration: 1000 ug/ml by Nanodrop; | <b>GeneID (NCBI):</b><br>25                                     | <b>CloneNo.:</b><br>1E7A5   |
| <b>Source:</b><br>Mouse  | <b>Full Name:</b><br>c-abl oncogene 1, receptor tyrosine kinase | <b>Recommended Dilutions:</b><br>IF/ICC 1:50-1:500                |
| <b>Isotype:</b><br>IgG2b                                       | <b>Calculated MW:</b><br>123 kDa                                | <b>Excitation/Emission maxima wavelengths:</b><br>493 nm / 522 nm |
| <b>Immunogen Catalog Number:</b><br>AG26152                    | <b>Observed MW:</b><br>140 kDa                                  |   |

## Applications

|                                       |  |
|---------------------------------------|--|
| <b>Tested Applications:</b><br>IF/ICC | <b>Positive Controls:</b><br>IF/ICC : HepG2 cells, MCF-7 cells |
| <b>Species Specificity:</b><br>Human  |  |

## Background Information

ABL1, also named as ABL, JTK7, c-ABL and p150, belongs to the protein kinase superfamily, Tyr protein kinase family and ABL subfamily. ABL1 regulates cytoskeleton remodeling during cell differentiation, cell division and cell adhesion. ABL1 localizes to dynamic actin structures, and phosphorylates CRK and CRKL, DOK1, and other proteins controlling cytoskeleton dynamics. It regulates DNA repair potentially by activating the proapoptotic pathway when the DNA damage is too severe to be repaired. ABL1 catalyze the reaction: ATP + a [protein]-L-tyrosine = ADP + a [protein]-L-tyrosine phosphate. A chromosomal aberration involving ABL1 is a cause of chronic myeloid leukemia (CML) [MIM:608232]. Translocation t(9;22)(q34;q11) with BCR. The translocation produces a BCR-ABL found also in acute myeloid leukemia (AML) and acute lymphoblastic leukemia (ALL). The antibody is specific to ABL1.

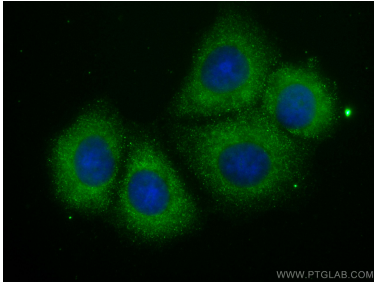
## Storage

**Storage:**  
Store at -20°C. Avoid exposure to light. Stable for one year after shipment.  
**Storage Buffer:**  
PBS with 50% Glycerol, 0.05% Proclin300, 0.5% BSA, pH 7.3.  
Aliquoting is unnecessary for -20°C storage

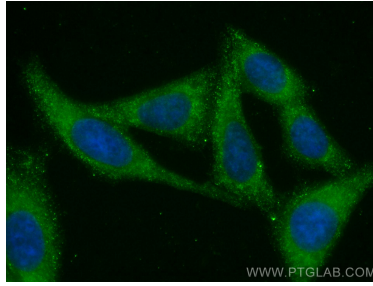
For technical support and original validation data for this product please contact:  
T: 1 (888) 4PTGLAB (1-888-478-4522) (toll free in USA), or 1(312) 455-8498 (outside USA)  
E: [proteintech@ptglab.com](mailto:proteintech@ptglab.com)  
W: [ptglab.com](http://ptglab.com)

This product is exclusively available under Proteintech Group brand and is not available to purchase from any other manufacturer.

## Selected Validation Data



Immunofluorescent analysis of (-20°C Methanol) fixed MCF-7 cells using CoraLite® Plus 488 ABL1 antibody (CL488-68254, Clone: 1E7A5 ) at dilution of 1:200.



Immunofluorescent analysis of (-20°C Ethanol) fixed HepG2 cells using CoraLite® Plus 488 ABL1 antibody (CL488-68254, Clone: 1E7A5 ) at dilution of 1:200.