

For Research Use Only

CoraLite® Plus 488-conjugated MAP4 Monoclonal antibody

Catalog Number: CL488-68271



Basic Information

Catalog Number: CL488-68271	GenBank Accession Number: BC012794	Purification Method: Protein G purification
Size: 100ul , Concentration: 1000 ug/ml by Nanodrop;	GeneID (NCBI): 4134	CloneNo.: 1C1A6
Source: Mouse	UNIPROT ID: P27816	Recommended Dilutions: IF/ICC 1:50-1:500
Isotype: IgG1	Full Name: microtubule-associated protein 4	Excitation/Emission maxima wavelengths: 493 nm / 522 nm
Immunogen Catalog Number: AG1741	Calculated MW: 121 kDa	
	Observed MW: 210-240 kDa	

Applications

Tested Applications: IF/ICC	Positive Controls: IF/ICC : A431 cells,
Species Specificity: human	

Background Information

MAP4 is a ubiquitously expressed microtubule-associated protein involved in the organization and stabilization of microtubules during various cellular activities. Recently it has been reported that expression of MAP4 was upregulated in esophageal squamous cell carcinoma (ESCC). MAP4 has been considered as an independent prognostic factor for ESCC. The predicted molecular weight of MAP4 is about 120 kDa, while higher molecular weight around 200-250 kDa is usually observed in WB test, which may be the result of glycosylation. (26876215, 8647865)

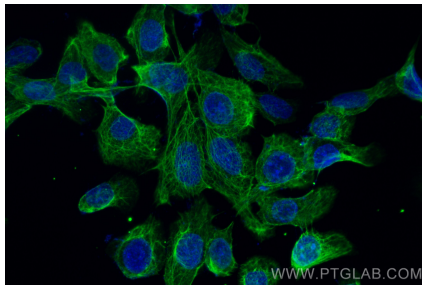
Storage

Storage:
Store at -20°C. Avoid exposure to light. Stable for one year after shipment.
Storage Buffer:
PBS with 50% Glycerol, 0.05% Proclin300, 0.5% BSA, pH 7.3.
Aliquoting is unnecessary for -20°C storage

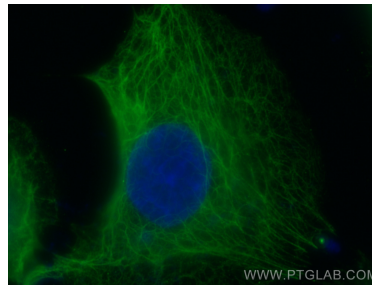
For technical support and original validation data for this product please contact:
T: 1 (888) 4PTGLAB (1-888-478-4522) (toll free in USA), or 1(312) 455-8498 (outside USA)
E: proteintech@ptglab.com
W: ptglab.com

This product is exclusively available under Proteintech Group brand and is not available to purchase from any other manufacturer.

Selected Validation Data



Immunofluorescent analysis of (-20°C Ethanol) fixed A431 cells using CoraLite® Plus 488 MAP4 antibody (CL488-68271, Clone: 1C1A6) at dilution of 1:200.



Immunofluorescent analysis of (-20°C Ethanol) fixed A431 cells using CoraLite® Plus 488 MAP4 antibody (CL488-68271, Clone: 1C1A6) at dilution of 1:200.