

For Research Use Only

# CoraLite® Plus 488-conjugated SCN5A Monoclonal antibody



Catalog Number: CL488-68273

## Basic Information

<b>Catalog Number:</b> CL488-68273	<b>GenBank Accession Number:</b> BC140813	<b>Purification Method:</b> Protein G purification
<b>Size:</b> 100ul , Concentration: 1000 µg/ml by Nanodrop;	<b>GeneID (NCBI):</b> 6331	<b>CloneNo.:</b> 1C2B3
<b>Source:</b> Mouse	<b>Full Name:</b> sodium channel, voltage-gated, type V, alpha subunit	<b>Excitation/Emission maxima wavelengths:</b> 493 nm / 522 nm
<b>Isotype:</b> IgG1	<b>Calculated MW:</b> 2016 aa, 227 kDa	
<b>Immunogen Catalog Number:</b> AG19275	<b>Observed MW:</b> 227 kDa	

## Applications

**Tested Applications:**  
FC (Intra)

**Species Specificity:**  
Human, Rat, Rabbit

## Background Information

Voltage-gated sodium channels are responsible for initiation and propagation of action potentials in the membranes of neurons and most electrically excitable cells (PMID: 10798388). These channels are composed of a large alpha subunit that forms the ion conduction pore and auxiliary beta subunits (PMID: 11486343). The alpha subunits form a gene family with at least 10 members. Nav1.5, encoded by the SCN5A gene in humans, is a pore forming alpha subunit of voltage-gated sodium channels. Nav1.5 is the principal Na<sup>+</sup> channel isoform expressed in cardiomyocytes. Mutations in SCN5A gene have been linked to many cardiac electrical disorders, including the congenital and acquired long QT syndrome, Brugada syndrome, conduction slowing, sick sinus syndrome, atrial fibrillation, and dilated cardiomyopathy (PMID: 23123192).

## Storage

**Storage:**  
Store at -20°C. Avoid exposure to light. Stable for one year after shipment.

**Storage Buffer:**  
PBS with 50% Glycerol, 0.05% Proclin300, 0.5% BSA, pH 7.3.

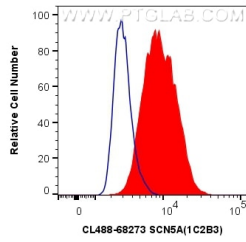
Aliquoting is unnecessary for -20°C storage

\*\*\* 20ul sizes contain 0.1% BSA

For technical support and original validation data for this product please contact:  
T: 1 (888) 4PTGLAB (1-888-478-4522) (toll free in USA), or 1(312) 455-8498 (outside USA)  
E: proteintech@ptglab.com  
W: ptglab.com

This product is exclusively available under Proteintech Group brand and is not available to purchase from any other manufacturer.

## Selected Validation Data



1X10<sup>6</sup> HeLa cells were intracellularly stained with 0.4 ug CoraLite® Plus 488 Anti-Human SCN5A (CL488-68273, Clone:1C2B3) (red), or 0.4 ug CoraLite® Plus 488 Mouse IgG1 Isotype Control (MOPC-21) (CL488-65124, Clone: MOPC-21) (blue). Cells were fixed with 4% PFA and permeabilized with Flow Cytometry Perm Buffer (PF00011-C).