

For Research Use Only

CoraLite® Plus 488-conjugated CRTAC1 Monoclonal antibody

Catalog Number: CL488-68276



Basic Information

Catalog Number: CL488-68276	GenBank Accession Number: BC034245	Purification Method: Protein A purification
Size: 100ul , Concentration: 1000 ug/ml by Nanodrop;	GeneID (NCBI): 55118	CloneNo.: 2A11E2
Source: Mouse	UNIPROT ID: Q9NQ79	Recommended Dilutions: IF/ICC 1:50-1:500
Isotype: IgG2b	Full Name: cartilage acidic protein 1	Excitation/Emission maxima wavelengths: 493 nm / 522 nm
Immunogen Catalog Number: AG32813	Calculated MW: 661 aa, 71 kDa	
	Observed MW: 71 kDa	

Applications

Tested Applications: IF/ICC	Positive Controls: IF/ICC : HeLa cells,
Species Specificity: human, mouse, rat, pig, rabbit	

Background Information

CRTAC1 (cartilage acidic protein 1) is also named as ASPIC1 and CEP68. CRTAC1 is an extracellular matrix protein of human chondrogenic tissue. CRTAC1 promotes cell proliferation, migration and extracellular matrix regeneration and remodeling in primary human fibroblasts (PMID:32084494). CRTAC1 expression is decreased in tissue samples of bladder urothelial carcinoma (PMID:34818994). CRTAC1 overexpression promotes the pyroptosis of human lens epithelial cells by facilitating the reactive oxygen species (ROS) production in the formation of cataract (PMID:32838966). CRTAC1 was the most compelling and robust biomarker for osteoarthritis severity and progression (PMID:35924962).

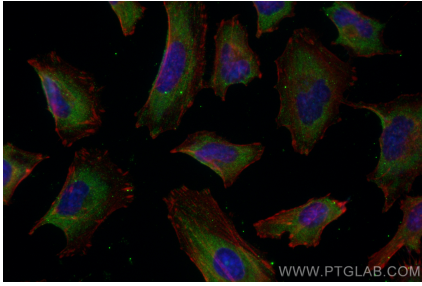
Storage

Storage:
Store at -20°C. Avoid exposure to light. Stable for one year after shipment.
Storage Buffer:
PBS with 50% Glycerol, 0.05% Proclin300, 0.5% BSA, pH 7.3.
Aliquoting is unnecessary for -20°C storage

For technical support and original validation data for this product please contact:
T: 1 (888) 4PTGLAB (1-888-478-4522) (toll free in USA), or 1(312) 455-8498 (outside USA)
E: proteintech@ptglab.com
W: ptglab.com

This product is exclusively available under Proteintech Group brand and is not available to purchase from any other manufacturer.

Selected Validation Data



Immunofluorescent analysis of (-20°C Ethanol) fixed HeLa cells using CoraLite® Plus 488 CRTAC1 antibody (CL488-68276, Clone: 2A11E2) at dilution of 1:200.