

For Research Use Only

CoraLite® Plus 488-conjugated LZTFL1 Monoclonal antibody

Catalog Number: CL488-68281



Basic Information

Catalog Number: CL488-68281	GenBank Accession Number: BC025988	Purification Method: Protein A purification
Size: 100ul , Concentration: 1000 ug/ml by Nanodrop;	GeneID (NCBI): 54585	CloneNo.: 2C1F6
Source: Mouse	UNIPROT ID: Q9NQ48	Excitation/Emission maxima wavelengths: 493 nm / 522 nm
Isotype: IgG2a	Full Name: leucine zipper transcription factor-like 1	
Immunogen Catalog Number: AG10733	Calculated MW: 299 aa, 35 kDa	
	Observed MW: 35 kDa	

Applications

Tested Applications:
FC (Intra)

Species Specificity:
Human

Background Information

LZTFL1 belongs to the LZTFL1 family. It is an important regulator of BBSome ciliary trafficking and hedgehog signaling. LZTFL1 regulates Ciliary Trafficking of the BBSome and Smoothened.(PMID:22072986)

Storage

Storage:
Store at -20°C. Avoid exposure to light. Stable for one year after shipment.

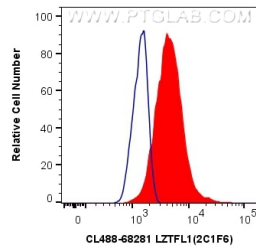
Storage Buffer:
PBS with 50% Glycerol, 0.05% Proclin300, 0.5% BSA, pH 7.3.

Aliquoting is unnecessary for -20°C storage

For technical support and original validation data for this product please contact:
T: 1 (888) 4PTGLAB (1-888-478-4522) (toll free in USA), or 1(312) 455-8498 (outside USA)
E: proteintech@ptglab.com
W: ptglab.com

This product is exclusively available under Proteintech Group brand and is not available to purchase from any other manufacturer.

Selected Validation Data



1X10⁶ Jurkat cells were intracellularly stained with 0.8 ug CoraLite® Plus 488 Anti-Human LZTFL1 (CL488-68281, Clone:2C1F6) (red), or 0.8 ug CoraLite® Plus 488 Mouse IgG2a Isotype Control (C1.18.4) (CL488-65208, Clone: C1.18.4) (blue). Cells were fixed with 4% PFA and permeabilized with Flow Cytometry Perm Buffer (PF00011-C).