

For Research Use Only

CoraLite® Plus 488-conjugated RABEP1 Monoclonal antibody

Catalog Number: CL488-68285



Basic Information

| | | |
|--|--|---|
| Catalog Number: CL488-68285 | GenBank Accession Number: BC041700 | Purification Method: Protein G purification |
| Size: 100ul , Concentration: 1000 ug/ml by Nanodrop; | GeneID (NCBI): 9135 | CloneNo.: 1E7E11 |
| Source: Mouse | UNIPROT ID: Q15276 | Recommended Dilutions: IF/ICC 1:50-1:500 |
| Isotype: IgG1 | Full Name: rabaptin, RAB GTPase binding effector protein 1 | Excitation/Emission maxima wavelengths: 493 nm / 522 nm |
| Immunogen Catalog Number: AG6023 | Calculated MW: 99 kDa | |
| | Observed MW: 100-105 kDa | |

Applications

| | |
|---|---|
| Tested Applications: IF/ICC | Positive Controls: IF/ICC : HeLa cells, |
| Species Specificity: Human, Mouse, Rat, Rabbit, Pig | |

Background Information

Rab GTPase-binding effector protein 1 is an enzyme that in humans is encoded by the RABEP1 gene. It belongs to rabaptin protein family. RABEP1 act as linker between gamma-adaptin, RAB4A and RAB5A. It is involved in endocytic membrane fusion and membrane trafficking of recycling endosomes. (PMID: 22841712)

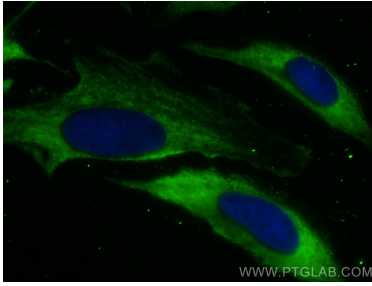
Storage

Storage:
Store at -20°C. Avoid exposure to light. Stable for one year after shipment.
Storage Buffer:
PBS with 50% Glycerol, 0.05% Proclin300, 0.5% BSA, pH 7.3.
Aliquoting is unnecessary for -20°C storage

For technical support and original validation data for this product please contact:
T: 1 (888) 4PTGLAB (1-888-478-4522) (toll free in USA), or 1(312) 455-8498 (outside USA)
E: proteintech@ptglab.com
W: ptglab.com

This product is exclusively available under Proteintech Group brand and is not available to purchase from any other manufacturer.

Selected Validation Data



Immunofluorescent analysis of (-20°C Methanol) fixed HeLa cells using CoraLite® Plus 488 RABEP1 antibody (CL488-68285, Clone: 1E7E11) at dilution of 1:100.