

For Research Use Only

CoraLite® Plus 488-conjugated SERCA3 Monoclonal antibody

Catalog Number: CL488-68287



Basic Information

Catalog Number:	GenBank Accession Number:	Purification Method:
CL488-68287	BC035729	Protein G purification
Size:	GeneID (NCBI):	CloneNo.:
100ul , Concentration: 1000 ug/ml by Nanodrop;	489	1A2C2
Source:	UNIPROT ID:	Recommended Dilutions:
Mouse	Q93084	IF/ICC 1:50-1:500
Isotype:	Full Name:	Excitation/Emission maxima
IgG1	ATPase, Ca++ transporting, ubiquitous	wavelengths:
Immunogen Catalog Number:	Calculated MW:	493 nm / 522 nm
AG4527	1043 aa, 114 kDa	
	Observed MW:	
	97-110 kDa	

Applications

Tested Applications:	Positive Controls:
IF/ICC	IF/ICC : HT-29 cells,
Species Specificity:	
human, mouse, rat	

Background Information

The SERCA, which pumps cytosolic Ca²⁺ into the ER, is an imperative maintainer of ER Ca²⁺ homeostasis. The mammalian SERCA family is comprised of three tissue-specific members, SERCA1-3. SERCA3 is present in endothelial and epithelial cells of various tissues. SERCA3 helps regulate intracellular Ca²⁺, which is critical for maintaining normal INS secretion and is closely linked to metabolism, neuronal plasticity, gene transcription, cell growth, differentiation, apoptosis, protein folding and carcinogenesis. Several isoforms of SERCA3 exist due to the alternative splicing.

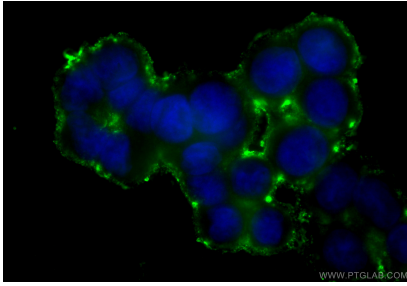
Storage

Storage:
Store at -20°C. Avoid exposure to light. Stable for one year after shipment.
Storage Buffer:
PBS with 50% Glycerol, 0.05% Proclin300, 0.5% BSA, pH 7.3.
Aliquoting is unnecessary for -20°C storage

For technical support and original validation data for this product please contact:
T: 1 (888) 4PTGLAB (1-888-478-4522) (toll free in USA), or 1(312) 455-8498 (outside USA)
E: proteintech@ptglab.com
W: ptglab.com

This product is exclusively available under Proteintech Group brand and is not available to purchase from any other manufacturer.

Selected Validation Data



Immunofluorescent analysis of (-20°C Methanol) fixed HT-29 cells using CoraLite® Plus 488 SERCA3 antibody (CL488-68287, Clone: 1A2C2) at dilution of 1:200.