

For Research Use Only



CoraLite® Plus 488-conjugated Cardiac Troponin T Monoclonal antibody

Catalog Number: **CL488-68300**

Basic Information

| | | |
|---|--|---|
| Catalog Number: CL488-68300 | GenBank Accession Number: BC002653 | Purification Method: Protein G purification |
| Size: 100ul , Concentration: 1000 µg/ml by Nanodrop; | GeneID (NCBI): 7139 | CloneNo.: 4E2D8 |
| Source: Mouse | Full Name: troponin T type 2 (cardiac) | Recommended Dilutions: IF 1:50-1:500 |
| Isotype: IgG1 | Calculated MW: 36 kDa | Excitation/Emission maxima wavelengths: 493 nm / 522 nm |
| Immunogen Catalog Number: AG7716 | Observed MW: 34-40 kDa | |

Applications

| | |
|---|---|
| Tested Applications: IF | Positive Controls: IF : H9C2 cells, |
| Species Specificity: mouse, rat, rabbit, pig, chicken | |

Background Information

Cardiac Troponin T, also named as cTnT, TNNT2. This gene encodes the cardiac isoform of troponin T. The encoded protein is the tropomyosin-binding subunit of the troponin complex, which is located on the thin filament of striated muscles and regulates muscle contraction in response to alterations in intracellular calcium ion concentration. Mutations in this gene have been associated with familial hypertrophic cardiomyopathy as well as with dilated cardiomyopathy. Cardiac Troponin T can be detected as about 34-40 kDa.

Storage

Storage:
Store at -20°C. Avoid exposure to light. Stable for one year after shipment.
Storage Buffer:
PBS with 50% Glycerol, 0.05% Proclin300, 0.5% BSA, pH 7.3.
Aliquoting is unnecessary for -20°C storage

***** 20ul sizes contain 0.1% BSA**

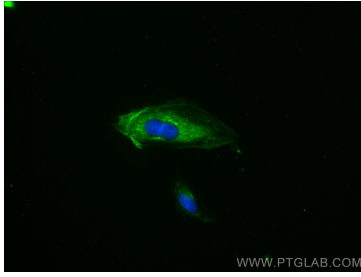
For technical support and original validation data for this product please contact:

T: 1 (888) 4PTGLAB (1-888-478-4522) (toll free
in USA), or 1(312) 455-8498 (outside USA)

E: proteintech@ptglab.com
W: ptglab.com

This product is exclusively available under Proteintech Group brand and is not available to purchase from any other manufacturer.

Selected Validation Data



Immunofluorescent analysis of (-20°C Methanol) fixed H9C2 cells using CoralLite® Plus 488 Cardiac Troponin T antibody (CL488-68300, Clone: 4E2D8) at dilution of 1:200.