

For Research Use Only

# CoraLite® Plus 488-conjugated Ataxin 2 Monoclonal antibody

Catalog Number: CL488-68316



## Basic Information

### Catalog Number:

CL488-68316

### Size:

100ul, Concentration: 1000 ug/ml by Nanodrop;

### Source:

Mouse

### Isotype:

IgM

### Immunogen Catalog Number:

AG17402

### GenBank Accession Number:

BC114546

### GeneID (NCBI):

6311

### UNIPROT ID:

Q99700

### Full Name:

ataxin 2

### Calculated MW:

1313 aa, 140 kDa

### Observed MW:

140-150 kDa

### Purification Method:

Caprylic acid/ammonium sulfate precipitation

### CloneNo.:

1E8A2

### Recommended Dilutions:

IF-P 1:50-1:500

### Excitation/Emission maxima wavelengths:

493 nm / 522 nm

## Applications

### Tested Applications:

IF-P

### Species Specificity:

Human, Mouse, Rat

### Positive Controls:

IF-P: rat brain tissue,

## Background Information

ATXN2 contains a repeat structure with 22 or 23 triplets coding for glutamine and the (CAG)<sub>8</sub>CAA(CAG)<sub>4</sub>CAA(CAG)<sub>8</sub> sequence; expansion of this domain to a size  $\geq 34$  triplets with a pure CAG sequence primarily causes autosomal dominant SCA2 [PMID:18418684], while ATXN2 expansions with CAA interruptions were observed as the cause of Levo-dopa responsive Parkinson's disease [PMID:10668726]. ATXN2 expansions associated with ALS were reported to be interrupted by at least one CAA triplet [PMID:21537950]

## Storage

### Storage:

Store at -20°C. Avoid exposure to light. Stable for one year after shipment.

### Storage Buffer:

PBS with 50% Glycerol, 0.05% Proclin300, 0.5% BSA, pH 7.3.

Aliquoting is unnecessary for -20°C storage

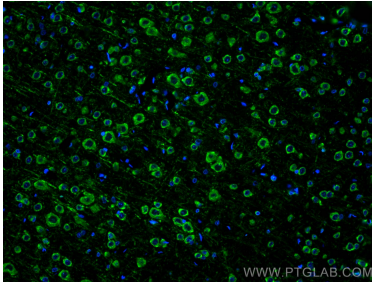
For technical support and original validation data for this product please contact:

T: 1 (888) 4PTGLAB (1-888-478-4522) (toll free in USA), or 1(312) 455-8498 (outside USA)

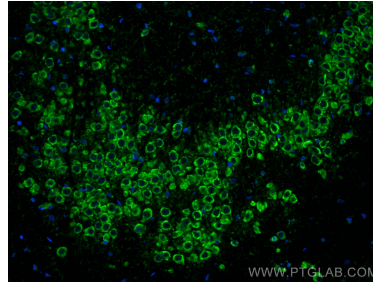
E: [proteintech@ptglab.com](mailto:proteintech@ptglab.com)  
W: [ptglab.com](http://ptglab.com)

This product is exclusively available under Proteintech Group brand and is not available to purchase from any other manufacturer.

## Selected Validation Data



Immunofluorescent analysis of (4% PFA) fixed rat brain tissue using CoraLite® Plus 488 Ataxin 2 antibody (CL488-68316, Clone: 1E8A2 ) at dilution of 1:200.



Immunofluorescent analysis of (4% PFA) fixed rat brain tissue using CoraLite® Plus 488 Ataxin 2 antibody (CL488-68316, Clone: 1E8A2 ) at dilution of 1:200.