

For Research Use Only

CoraLite® Plus 488-conjugated SH3GLB2 Monoclonal antibody

Catalog Number:CL488-68325



Basic Information

Catalog Number:	GenBank Accession Number:	Purification Method:
CL488-68325	BC014635	Protein G purification
Size:	GeneID (NCBI):	CloneNo.:
100ul , Concentration: 1000 ug/ml by Nanodrop;	56904	4B1A10
Source:	UNIPROT ID:	Recommended Dilutions:
Mouse	Q9NR46	IF/ICC 1:50-1:500
Isotype:	Full Name:	Excitation/Emission maxima wavelengths:
IgG1	SH3-domain GRB2-like endophilin B2	493 nm / 522 nm
Immunogen Catalog Number:	Calculated MW:	
AG8932	395 aa, 44 kDa	
	Observed MW:	
	47-50 kDa	

Applications

Tested Applications:	Positive Controls:
IF/ICC	IF/ICC : HeLa cells,
Species Specificity:	
Human, mouse, rat, pig, rabbit	

Background Information

SH3GLB2 is an endophilin-related protein family with 395-amino acid protein and contains an N-terminal domain, a central coiled-coil region, and a C-terminal SH3 domain. SH3GLB2 is expressed in many tissues, including skeletal muscle, adipocytes, brain, lung, colon, and mammary gland. SH3GLB2 was expressed in the cytoplasm of transfected HeLa cells and was excluded from nuclei(PMID: 11161816).

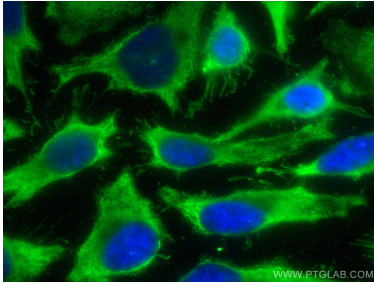
Storage

Storage:
Store at -20°C. Avoid exposure to light. Stable for one year after shipment.
Storage Buffer:
PBS with 50% Glycerol, 0.05% Proclin300, 0.5% BSA, pH 7.3.
Aliquoting is unnecessary for -20°C storage

For technical support and original validation data for this product please contact:
T: 1 (888) 4PTGLAB (1-888-478-4522) (toll free in USA), or 1(312) 455-8498 (outside USA)
E: proteintech@ptglab.com
W: ptglab.com

This product is exclusively available under Proteintech Group brand and is not available to purchase from any other manufacturer.

Selected Validation Data



Immunofluorescent analysis of (-20°C Ethanol) fixed HeLa cells using CoraLite® Plus 488 SH3GLB2 antibody (CL488-68325, Clone: 4B1A10) at dilution of 1:200.