

For Research Use Only

CoraLite® Plus 488-conjugated AZI2 Monoclonal antibody

Catalog Number: CL488-68326



Basic Information

Catalog Number: CL488-68326	GenBank Accession Number: BC001139	Purification Method: Protein G purification
Size: 100ul , Concentration: 1000 ug/ml by Nanodrop;	GeneID (NCBI): 64343	CloneNo.: 2F1G5
Source: Mouse	UNIPROT ID: Q9H6S1	Recommended Dilutions: IF/ICC 1:200-1:800
Isotype: IgG1	Full Name: 5-azacytidine induced 2	Excitation/Emission maxima wavelengths: 493 nm / 522 nm
Immunogen Catalog Number: AG6755	Calculated MW: 45 kDa	
	Observed MW: 45 kDa	

Applications

Tested Applications: IF/ICC, FC (Intra)	Positive Controls: IF/ICC : HeLa cells,
Species Specificity: human	

Background Information

AZI2, also known as NAP1, is a TNF receptor (TNFR)-associated factor family member-associated NF- κ B activator-binding kinase 1-binding protein that regulates the production of IFNs. It is an adapter protein which binds TBK1 and IKK ϵ playing a role in antiviral innate immunity. NAP1 is a kind of adapter protein which binds TBK1 and IKK ϵ playing a role in antiviral innate immunity. (PMID: 21931631)

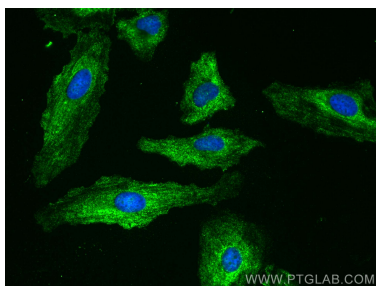
Storage

Storage:
Store at -20°C. Avoid exposure to light. Stable for one year after shipment.
Storage Buffer:
PBS with 50% Glycerol, 0.05% Proclin300, 0.5% BSA, pH 7.3.
Aliquoting is unnecessary for -20°C storage

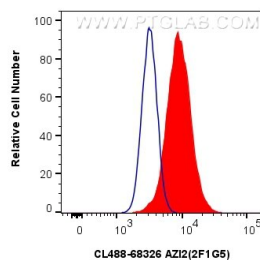
For technical support and original validation data for this product please contact:
T: 1 (888) 4PTGLAB (1-888-478-4522) (toll free in USA), or 1(312) 455-8498 (outside USA)
E: proteintech@ptglab.com
W: ptglab.com

This product is exclusively available under Proteintech Group brand and is not available to purchase from any other manufacturer.

Selected Validation Data



Immunofluorescent analysis of (-20°C Methanol) fixed HeLa cells using CoraLite® Plus 488 AZI2 antibody (CL488-68326, Clone: 2F1G5) at dilution of 1:200.



1x10⁶ HeLa cells were intracellularly stained with 0.4 ug CoraLite® Plus 488-conjugated AZI2 Monoclonal antibody (CL488-68326, Clone:2F1G5) (red), or 0.4 ug CoraLite® Plus 488 Mouse IgG1 Isotype Control (1F8D3) (CL488-66360-1, Clone: 1F8D3) (blue). Cells were fixed with 4% PFA and permeabilized with Flow Cytometry Perm Buffer (PF00011-C).