

For Research Use Only

CoraLite® Plus 488-conjugated CCS Monoclonal antibody



Catalog Number: CL488-68341

Basic Information

Catalog Number: CL488-68341	GenBank Accession Number: BC105016	Purification Method: Protein A purification
Size: 100ul , Concentration: 1000 µg/ml by Nanodrop;	GeneID (NCBI): 9973	CloneNo.: 3F5E5
Source: Mouse	Full Name: copper chaperone for superoxide dismutase	Recommended Dilutions: IF 1:50-1:500
Isotype: IgG2a	Calculated MW: 274 aa, 29 kDa	Excitation/Emission maxima wavelengths: 493 nm / 522 nm
Immunogen Catalog Number: AG18860	Observed MW: 32 kDa	

Applications

Tested Applications: IF	Positive Controls: IF : HepG2 cells,
Species Specificity: Human, mouse, rat	

Background Information

Copper chaperone for superoxide dismutase (CCS) is a soluble factor that converts copper into copper-zinc superoxide dismutase (SOD1). CCS and SOD1 interact directly in vivo and in vitro, and this interaction is mediated by homologous domains in each protein. CCS not only interacts with wild-type SOD1 but also interacts with SOD1 containing common missense mutations, resulting in FALS.

Storage

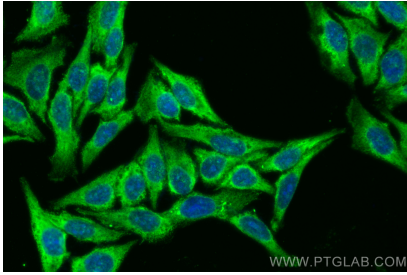
Storage:
Store at -20°C. Avoid exposure to light. Stable for one year after shipment.
Storage Buffer:
PBS with 50% Glycerol, 0.05% Proclin300, 0.5% BSA, pH 7.3.
Aliquoting is unnecessary for -20°C storage

*** 20ul sizes contain 0.1% BSA

For technical support and original validation data for this product please contact:
T: 1 (888) 4PTGLAB (1-888-478-4522) (toll free in USA), or 1(312) 455-8498 (outside USA)
E: proteintech@ptglab.com
W: ptglab.com

This product is exclusively available under Proteintech Group brand and is not available to purchase from any other manufacturer.

Selected Validation Data



Immunofluorescent analysis of (-20°C Methanol) fixed HepG2 cells using CoraLite® Plus 488 CCS antibody (CL488-68341, Clone: 3F5E5) at dilution of 1:200.