

For Research Use Only

CoraLite® Plus 488-conjugated PCYT2 Monoclonal antibody

Catalog Number: CL488-68355



Basic Information

Catalog Number: CL488-68355	GenBank Accession Number: BC000351	Purification Method: Protein A purification
Size: 100ul , Concentration: 1000 ug/ml by Nanodrop;	GeneID (NCBI): 5833	CloneNo.: 2F7G1
Source: Mouse	UNIPROT ID: Q99447	Recommended Dilutions: IF/ICC 1:50-1:500
Isotype: IgG2a	Full Name: phosphate cytidylyltransferase 2, ethanolamine	Excitation/Emission maxima wavelengths: 493 nm / 522 nm
Immunogen Catalog Number: AG6604	Calculated MW: 44 kDa	
	Observed MW: 44 kDa	

Applications

Tested Applications: IF/ICC	Positive Controls: IF/ICC : HepG2 cells,
Species Specificity: human	

Background Information

Ethanolamine-phosphate cytidylyltransferase (PCYT2) catalyzes the second step in the synthesis of phosphatidylethanolamine (PE) from ethanolamine via the CDP-ethanolamine pathway (PMID:9083101, PMID:31637422). Phosphatidylethanolamine is a dominant inner-leaflet phospholipid in cell membranes, where it plays a role in membrane function by structurally stabilizing membrane-anchored proteins, and participates in important cellular processes such as cell division, cell fusion, blood coagulation, and apoptosis (PMID:9083101).

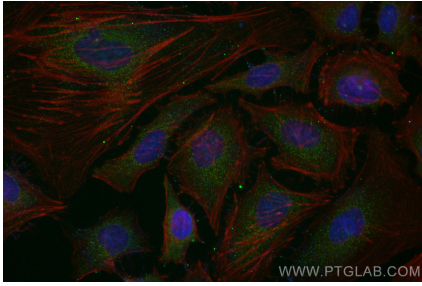
Storage

Storage:
Store at -20°C. Avoid exposure to light. Stable for one year after shipment.
Storage Buffer:
PBS with 50% Glycerol, 0.05% Proclin300, 0.5% BSA, pH 7.3.
Aliquoting is unnecessary for -20°C storage

For technical support and original validation data for this product please contact:
T: 1 (888) 4PTGLAB (1-888-478-4522) (toll free in USA), or 1(312) 455-8498 (outside USA)
E: proteintech@ptglab.com
W: ptglab.com

This product is exclusively available under Proteintech Group brand and is not available to purchase from any other manufacturer.

Selected Validation Data



Immunofluorescent analysis of (-20°C Ethanol) fixed HepG2 cells using CoraLite® Plus 488 PCYT2 antibody (CL488-68355, Clone: 2F7G1) at dilution of 1:200.