

For Research Use Only

CoraLite® Plus 488-conjugated NDUFB7 Monoclonal antibody

Catalog Number: CL488-68362



Basic Information

Catalog Number: CL488-68362	GenBank Accession Number: BC002595	Purification Method: Protein G purification
Size: 100ul , Concentration: 1000 ug/ml by Nanodrop;	GeneID (NCBI): 4713	CloneNo.: 1H8C1
Source: Mouse	UNIPROT ID: P17568	Excitation/Emission maxima wavelengths: 493 nm / 522 nm
Isotype: IgG1	Full Name: NADH dehydrogenase (ubiquinone) 1 beta subcomplex, 7, 18kDa	
Immunogen Catalog Number: AG6720	Calculated MW: 16 kDa	
	Observed MW: 18 kDa	

Applications

Tested Applications:
FC (Intra)

Species Specificity:
human, mouse, rat, pig, rabbit

Background Information

NDUFB7(NADH dehydrogenase [ubiquinone] 1 beta subcomplex subunit 7) is also named as CI-B18 and belongs to the complex I NDUFB7 subunit family. It is an accessory subunit of the mitochondrial membrane respiratory chain NADH dehydrogenase (Complex I), which couples the oxidation of NADH to the reduction of ubiquinone and the translocation of protons across the inner membrane. NDUFB7 protein lacks a mitochondrial targeting signal and transmembrane domains. However, it has a Cx(9)C motif that includes an intermembrane space targeting signal. (PMID:21310150).

Storage

Storage:
Store at -20°C. Avoid exposure to light. Stable for one year after shipment.

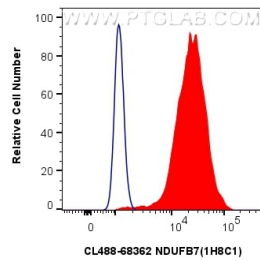
Storage Buffer:
PBS with 50% Glycerol, 0.05% Proclin300, 0.5% BSA, pH 7.3.

Aliquoting is unnecessary for -20°C storage

For technical support and original validation data for this product please contact:
T: 1 (888) 4PTGLAB (1-888-478-4522) (toll free in USA), or 1(312) 455-8498 (outside USA)
E: proteintech@ptglab.com
W: ptglab.com

This product is exclusively available under Proteintech Group brand and is not available to purchase from any other manufacturer.

Selected Validation Data



1×10^6 HEK-293 cells were intracellularly stained with 0.4 μ g CoraLite® Plus 488 Anti-Human NDUFB7 (CL488-68362, Clone: 1H8C1) (red), or 0.4 μ g CoraLite® Plus 488 Mouse IgG1 Isotype Control (MOPC-21) (CL488-65124, Clone: MOPC-21) (blue). Cells were fixed with 4% PFA and permeabilized with Flow Cytometry Perm Buffer (PF00011-C).