

For Research Use Only

CoraLite® Plus 488-conjugated AMOTL2 Monoclonal antibody

Catalog Number:CL488-68401



Basic Information

Catalog Number: CL488-68401	GenBank Accession Number: BC011454	Purification Method: Protein G purification
Size: 100ul , Concentration: 1000 ug/ml by Nanodrop;	GeneID (NCBI): 51421	CloneNo.: 2C4A4
Source: Mouse	UNIPROT ID: Q9Y2J4	Recommended Dilutions: IF/ICC 1:50-1:500
Isotype: IgG1	Full Name: angiotensin like 2	Excitation/Emission maxima wavelengths: 493 nm / 522 nm
Immunogen Catalog Number: AG19971	Calculated MW: 779 aa, 86 kDa	
	Observed MW: 100 kDa	

Applications

Tested Applications: IF/ICC	Positive Controls: IF/ICC : A549 cells,
Species Specificity: Human	

Background Information

Angiotensin-like 2 (AMOTL2) is a member of the motin family of angiotensin-binding proteins. The motin family, also known as AMOTs, consists of three members: AMOT, AMOT-like 1 (AMOTL1) and AMOTL2. Members of the motin family are a type of adaptor proteins mainly distributed in the cytomembrane, cytoplasm or nucleus, and have a higher expression in the endothelial cells of capillaries and in larger vessels of the placenta. Human AmotL2 encodes two isoforms of a molecular mass of 100 kDa and 60 kDa.(PMID: 34036399,PMID: 25080976)

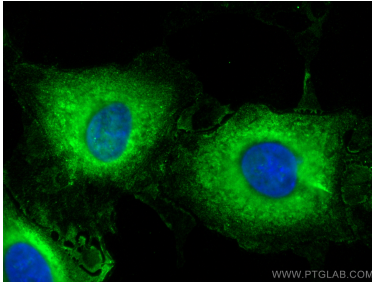
Storage

Storage:
Store at -20°C. Avoid exposure to light. Stable for one year after shipment.
Storage Buffer:
PBS with 50% Glycerol, 0.05% Proclin300, 0.5% BSA, pH 7.3.
Aliquoting is unnecessary for -20°C storage

For technical support and original validation data for this product please contact:
T: 1 (888) 4PTGLAB (1-888-478-4522) (toll free in USA), or 1(312) 455-8498 (outside USA)
E: proteintech@ptglab.com
W: ptglab.com

This product is exclusively available under Proteintech Group brand and is not available to purchase from any other manufacturer.

Selected Validation Data



Immunofluorescent analysis of (-20°C Methanol) fixed A549 cells using Coralite® Plus 488 AMOTL2 antibody (CL488-68401, Clone: 2C4A4) at dilution of 1:200.