

For Research Use Only

CoraLite® Plus 488-conjugated PMS1 Monoclonal antibody

Catalog Number: CL488-68413



Basic Information

Catalog Number: CL488-68413	GenBank Accession Number: BC096331	Purification Method: Protein A purification
Size: 100ul , Concentration: 1000 ug/ml by Nanodrop;	GeneID (NCBI): 5378	CloneNo.: 1A6G3
Source: Mouse	UNIPROT ID: P54277	Recommended Dilutions: IF/ICC 1:200-1:800
Isotype: IgG2a	Full Name: PMS1 postmeiotic segregation increased 1 (S. cerevisiae)	Excitation/Emission maxima wavelengths: 493 nm / 522 nm
Immunogen Catalog Number: AG28127	Observed MW: 106 kDa	

Applications

Tested Applications: IF/ICC, FC (Intra)	Positive Controls: IF/ICC : Caco-2 cells,
Species Specificity: human	

Background Information

PMS1 Homolog 1 is a member of the DNA mismatch repair enzymes (MMREs) which is to eliminate the mismatch of insertions and deletions as a consequence of DNA polymerase errors at DNA synthesis in eukaryotes. PMS1 and MLH1 could form a heterodimer MutLβ that belongs to MMREs (PMID:25619773). In the MMR system, the MutS complex recognizes the DNA mispairs firstly, and then the MLh1-Pms1 and other associated proteins such as PCNA, RFC, Exo1 were recruited, inducing Exonuclease 1 (Exo1)-dependent and -independent MMR pathways (PMID:24981171). Mutations in this gene cause hereditary nonpolyposis colorectal cancer (HNPCC), which is also known as Lynch syndrome. It was reported that PMS1 is a widely expressed protein and located in the nucleus. Alternative splicing allows for 4 isoforms of PMS1 protein.

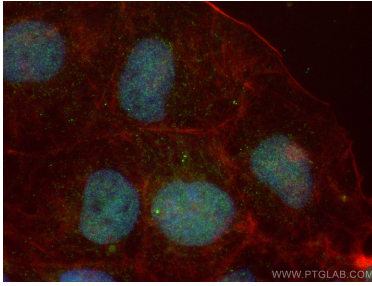
Storage

Storage:
Store at -20°C. Avoid exposure to light. Stable for one year after shipment.
Storage Buffer:
PBS with 50% Glycerol, 0.05% Proclin300, 0.5% BSA, pH 7.3.
Aliquoting is unnecessary for -20°C storage

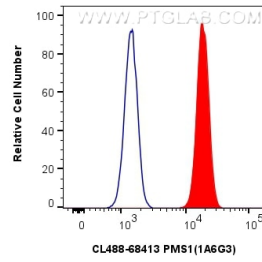
For technical support and original validation data for this product please contact:
T: 1 (888) 4PTGLAB (1-888-478-4522) (toll free in USA), or 1(312) 455-8498 (outside USA)
E: proteintech@ptglab.com
W: ptglab.com

This product is exclusively available under Proteintech Group brand and is not available to purchase from any other manufacturer.

Selected Validation Data



Immunofluorescent analysis of (4% PFA) fixed Caco-2 cells using Coralite® Plus 488 PMS1 antibody (CL488-68413, Clone: 1A6G3) at dilution of 1:200, CL594-Phalloidin (red).



1x10⁶ HepG2 cells were intracellularly stained with 0.4 ug Coralite® Plus 488-conjugated PMS1 Monoclonal antibody (CL488-68413, Clone:1A6G3) (red), or 0.4 ug Isotype Control (blue). Cells were fixed and permeabilized with Transcription Factor Staining Buffer Kit (PF00011).