

For Research Use Only

# CoraLite® Plus 488-conjugated MPI Monoclonal antibody



Catalog Number: CL488-68417

## Basic Information

<b>Catalog Number:</b> CL488-68417	<b>GenBank Accession Number:</b> BC046357	<b>Purification Method:</b> Protein G purification
<b>Size:</b> 100ul , Concentration: 1000 µg/ml by Nanodrop;	<b>GeneID (NCBI):</b> 4351	<b>CloneNo.:</b> 3B10A6
<b>Source:</b> Mouse	<b>UNIPROT ID:</b> P34949	<b>Recommended Dilutions:</b> IF 1:50-1:500
<b>Isotype:</b> IgG1	<b>Full Name:</b> mannose phosphate isomerase	<b>Excitation/Emission maxima wavelengths:</b> 493 nm / 522 nm
<b>Immunogen Catalog Number:</b> AG5475	<b>Calculated MW:</b> 47 kDa	
	<b>Observed MW:</b> 40-47 kDa	

## Applications

<b>Tested Applications:</b> IF	<b>Positive Controls:</b> IF : NIH/3T3 cells,
<b>Species Specificity:</b> Human, Rat, Pig, Mouse	

## Background Information

MPI (mannose-6-phosphate isomerase) is also named as PMI1 and belongs to the mannose-6-phosphate isomerase type 1 family. It is a zinc metalloenzyme that catalyzes the reversible isomerization of mannose-6-phosphate and fructose-6-phosphate. MPI plays a critical role in maintaining the supply of D-mannose derivatives, which are required for most glycosylation reactions. This protein has 2 isoforms produced by alternative splicing.

## Storage

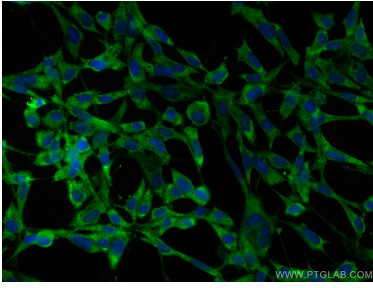
**Storage:**  
Store at -20°C. Avoid exposure to light. Stable for one year after shipment.  
**Storage Buffer:**  
PBS with 50% Glycerol, 0.05% Proclin300, 0.5% BSA, pH 7.3.  
Aliquoting is unnecessary for -20°C storage

\*\*\* 20ul sizes contain 0.1% BSA

For technical support and original validation data for this product please contact:  
T: 1 (888) 4PTGLAB (1-888-478-4522) (toll free in USA), or 1(312) 455-8498 (outside USA)  
E: proteintech@ptglab.com  
W: ptglab.com

This product is exclusively available under Proteintech Group brand and is not available to purchase from any other manufacturer.

## Selected Validation Data



Immunofluorescent analysis of (-20°C Ethanol) fixed NIH/3T3 cells using CoraLite® Plus 488 MPI antibody (CL488-68417, Clone: 3B10A6) at dilution of 1:200.