

For Research Use Only

CoraLite® Plus 488-conjugated SSSCA1 Monoclonal antibody



Catalog Number: **CL488-68423**

Basic Information

Catalog Number: CL488-68423	GenBank Accession Number: BC014791	Purification Method: Protein G purification
Size: 100ul , Concentration: 1000 µg/ml by Nanodrop;	GeneID (NCBI): 10534	CloneNo.: 1D2E8
Source: Mouse	UNIPROT ID: O60232	Recommended Dilutions: IF 1:50-1:500
Isotype: IgG1	Full Name: Sjogren syndrome/scleroderma autoantigen 1	Excitation/Emission maxima wavelengths: 493 nm / 522 nm
Immunogen Catalog Number: AG16783	Calculated MW: 199 aa, 21 kDa	
	Observed MW: 23 kDa	

Applications

Tested Applications: IF	Positive Controls: IF : HeLa cells,
Species Specificity: Human, mouse, rat	

Background Information

SSSCA1, also named as Autoantigen p27, is centromere-associated protein. It may induce anti-centromere antibodies. SSSCA1 plays a role in mitosis. It's involved in Sjogren syndrome/scleroderma. The calculated MW of SSSCA1 is 21.5 kDa (native form), with modification the MW is about 23-27 kDa.

Storage

Storage:
Store at -20°C. Avoid exposure to light. Stable for one year after shipment.
Storage Buffer:
PBS with 50% Glycerol, 0.05% Proclin300, 0.5% BSA, pH 7.3.
Aliquoting is unnecessary for -20°C storage

***** 20ul sizes contain 0.1% BSA**

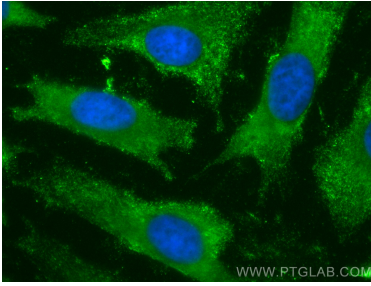
For technical support and original validation data for this product please contact:

T: 1 (888) 4PTGLAB (1-888-478-4522) (toll free
in USA), or 1(312) 455-8498 (outside USA)

E: proteintech@ptglab.com
W: ptglab.com

This product is exclusively available under Proteintech Group brand and is not available to purchase from any other manufacturer.

Selected Validation Data



Immunofluorescent analysis of (-20°C Methanol) fixed HeLa cells using CoraLite® Plus 488 SSSCA1 antibody (CL488-68423, Clone: 1D2E8) at dilution of 1:200.