

For Research Use Only



# CoraLite® Plus 488-conjugated Spermidine synthase Monoclonal antibody

Catalog Number: **CL488-68548**

## Basic Information

<b>Catalog Number:</b> CL488-68548	<b>GenBank Accession Number:</b> BC000309	<b>Purification Method:</b> Protein A purification
<b>Size:</b> 100ul , Concentration: 1000 ug/ml by Nanodrop;	<b>GeneID (NCBI):</b> 6723	<b>CloneNo.:</b> 2F4E10
<b>Source:</b> Mouse	<b>UNIPROT ID:</b> P19623	<b>Recommended Dilutions:</b> IF/ICC 1:50-1:500
<b>Isotype:</b> IgG2b	<b>Full Name:</b> spermidine synthase	<b>Excitation/Emission maxima wavelengths:</b> 493 nm / 522 nm
<b>Immunogen Catalog Number:</b> AG33919	<b>Calculated MW:</b> 302 aa, 34 kDa	
	<b>Observed MW:</b> 34 kDa	

## Applications

<b>Tested Applications:</b> IF/ICC	<b>Positive Controls:</b> IF/ICC : RAW 264.7 cells, HepG2 cells
<b>Species Specificity:</b> human, mouse	

## Background Information

Spermidine synthase is an enzyme that catalyzes the transfer of the propylamine group from S-adenosylmethionine to putrescine in the biosynthesis of spermidine. The polyamines putrescine, spermine, and spermidine are ubiquitous polycationic mediators of cell growth and differentiation. Spermidine synthases catalyze the production of the linear triamine, spermidine, from putrescine. They utilize decarboxylated S-adenosylmethionine (dc-SAM), a universal cofactor of aminopropyltransferases, as a donor of the aminopropyl moiety (PMID:31134111).

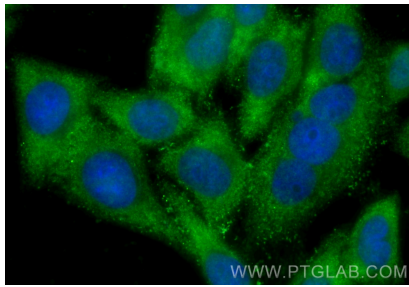
## Storage

**Storage:**  
Store at -20°C. Avoid exposure to light. Stable for one year after shipment.  
**Storage Buffer:**  
PBS with 50% Glycerol, 0.05% Proclin300, 0.5% BSA, pH 7.3.  
**Aliquoting is unnecessary for -20°C storage**

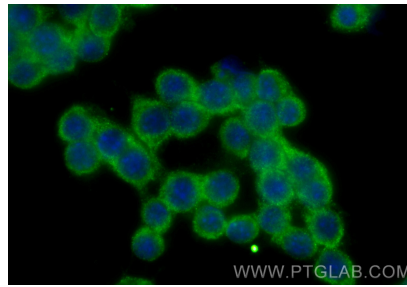
For technical support and original validation data for this product please contact:  
T: 1 (888) 4PTGLAB (1-888-478-4522) (toll free in USA), or 1(312) 455-8498 (outside USA)  
E: [proteintech@ptglab.com](mailto:proteintech@ptglab.com)  
W: [ptglab.com](http://ptglab.com)

This product is exclusively available under Proteintech Group brand and is not available to purchase from any other manufacturer.

## Selected Validation Data



Immunofluorescent analysis of (-20°C Ethanol) fixed HepG2 cells using CoraLite® Plus 488 Spermidine synthase antibody (CL488-68548, Clone: 2F4E10 ) at dilution of 1:200.



Immunofluorescent analysis of (-20°C Ethanol) fixed RAW 264.7 cells using CoraLite® Plus 488 Spermidine synthase antibody (CL488-68548, Clone: 2F4E10 ) at dilution of 1:200.