

For Research Use Only

CoraLite® Plus 488-conjugated MRPL10 Monoclonal antibody

Catalog Number:CL488-68623



Basic Information

Catalog Number: CL488-68623	GenBank Accession Number: BC052601	Purification Method: Protein A purification
Size: 100ul , Concentration: 1000 ug/ml by Nanodrop;	GeneID (NCBI): 124995	CloneNo.: 2A1C4
Source: Mouse	UNIPROT ID: Q7Z7H8	Recommended Dilutions: IF/ICC 1:50-1:500
Isotype: IgG2a	Full Name: mitochondrial ribosomal protein L10	Excitation/Emission maxima wavelengths: 493 nm / 522 nm
Immunogen Catalog Number: AG10060	Calculated MW: 261 aa, 29 kDa	
	Observed MW: 29 kDa	

Applications

Tested Applications: IF/ICC	Positive Controls: IF/ICC : HeLa cells,
Species Specificity: human	

Storage

Storage:
Store at -20°C. Avoid exposure to light. Stable for one year after shipment.
Storage Buffer:
PBS with 50% Glycerol, 0.05% Proclin300, 0.5% BSA, pH 7.3.
Aliquoting is unnecessary for -20°C storage

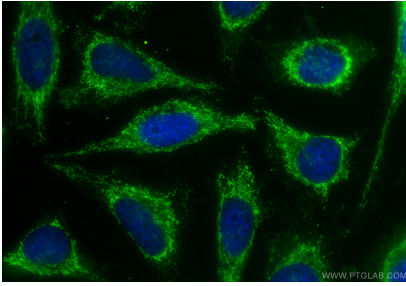
For technical support and original validation data for this product please contact:

T: 1 (888) 4PTGLAB (1-888-478-4522) (toll free in USA), or 1(312) 455-8498 (outside USA)

E: proteintech@ptglab.com
W: ptglab.com

This product is exclusively available under Proteintech Group brand and is not available to purchase from any other manufacturer.

Selected Validation Data



Immunofluorescent analysis of (-20°C Ethanol) fixed HeLa cells using CoraLite® Plus 488 MRPL10 antibody (CL488-68623, Clone: 2A1C4) at dilution of 1:200.