

For Research Use Only

CoraLite®488-conjugated IL-6 Monoclonal antibody



Catalog Number:CL488-69001

Basic Information

Catalog Number:

CL488-69001

Size:

100ul , Concentration: 1000 µg/ml by
Nanodrop;

Source:

Mouse

Isotype:

IgG1

Immunogen Catalog Number:

HZ-1019

GenBank Accession Number:

GeneID (NCBI):

3569

Full Name:

interleukin 6 (interferon, beta 2)

Purification Method:

Protein G purification

CloneNo.:

4G3E6

Excitation/Emission maxima
wavelengths:

488 nm/515 nm

Applications

Tested Applications:

FC (Intra)

Species Specificity:

Human

Background Information

Interleukin-6 (IL-6) is an interleukin that acts as both a pro-inflammatory and anti-inflammatory cytokine. IL-6 protein is secreted by a variety of cell types including T cells and macrophages as phosphorylated and variably glycosylated molecule. IL-6 plays an essential role in the final differentiation of B-cells into Ig-secreting cells involved in lymphocyte and monocyte differentiation. It induces myeloma and plasmacytoma growth and induces nerve cells differentiation Acts on B-cells, T-cells, hepatocytes, hematopoietic progenitor cells and cells of the CNS. IL-6 is also considered a myokine, a cytokine produced from muscle, and is elevated in response to muscle contraction. IL-6 has been shown to interact with interleukin-6 receptor and glycoprotein 130. Additionally, IL-6 is involved in hematopoiesis, bone metabolism, and cancer progression, and has been defined an essential role in directing transition from innate to acquired immunity.

This antibody is used to Block/Neutralize IL6 protein.

Storage

Storage:

Store at -20°C. Avoid exposure to light.

Storage Buffer:

PBS with 50% Glycerol, 0.05% Proclin300, 0.5% BSA, pH 7.3.

Aliquoting is unnecessary for -20°C storage

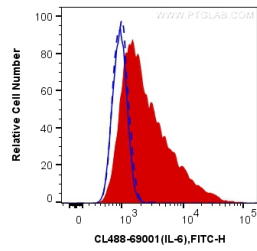
For technical support and original validation data for this product please contact:

T: 1 (888) 4PTGLAB (1-888-478-4522) (toll free
in USA), or 1(312) 455-8498 (outside USA)

E: proteintech@ptglab.com
W: ptglab.com

This product is exclusively available under Proteintech Group brand and is not available to purchase from any other manufacturer.

Selected Validation Data



1X10⁶ HUVEC cells untreated (dashed lines) or treated with LPS and Brefeldin A (red) were intracellularly stained with 0.5 ug CoraLite®488 Anti-Human IL-6 (CL488-69001, Clone:4G3E6), or 0.5 ug Control Antibody (blue). Cells were fixed with 4% PFA and permeabilized with Flow Cytometry Perm Buffer (PF00011-C).