

For Research Use Only



# CoraLite® Plus 488-conjugated smooth muscle actin specific Recombinant antibody

Catalog Number:CL488-80008

## Basic Information

<b>Catalog Number:</b> CL488-80008	<b>GenBank Accession Number:</b> NM_001613	<b>Purification Method:</b> Protein A purification
<b>Size:</b> 100ul , Concentration: 1000 µg/ml by Nanodrop;	<b>GeneID (NCBI):</b> 59	<b>CloneNo.:</b> 5H7
<b>Source:</b> Rabbit	<b>Full Name:</b> actin, alpha 2, smooth muscle, aorta	<b>Recommended Dilutions:</b> IF 1:50-1:500
<b>Isotype:</b> IgG	<b>Calculated MW:</b> 42 kDa	<b>Excitation/Emission maxima wavelengths:</b> 493 nm / 522 nm
	<b>Observed MW:</b> 42 kDa	

## Applications

<b>Tested Applications:</b> FC (Intra), IF	<b>Positive Controls:</b> IF : mouse heart tissue,
<b>Species Specificity:</b> Human, mouse, rat, chicken, pig	

## Background Information

ACTA2 (also known as  $\alpha$ -smooth muscle actin or  $\alpha$ -SMA) belongs to the actin family. Actins are highly conserved proteins that are involved in various types of cell motility and are ubiquitously expressed in all eukaryotic cells. ACTA2 is primarily expressed in vascular smooth muscle and anti-ACTA2 is commonly used to marker smooth muscle cells.

## Storage

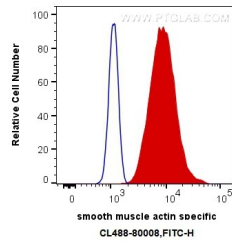
**Storage:**  
Store at -20°C. Avoid exposure to light. Stable for one year after shipment.  
**Storage Buffer:**  
PBS with 50% Glycerol, 0.05% Proclin300, 0.5% BSA, pH 7.3.  
Aliquoting is unnecessary for -20°C storage

\*\*\* 20ul sizes contain 0.1% BSA

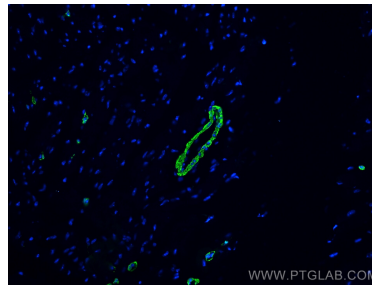
For technical support and original validation data for this product please contact:  
T: 1 (888) 4PTGLAB (1-888-478-4522) (toll free in USA), or 1(312) 455-8498 (outside USA) E: [proteintech@ptglab.com](mailto:proteintech@ptglab.com) W: [ptglab.com](http://ptglab.com)

This product is exclusively available under Proteintech Group brand and is not available to purchase from any other manufacturer.

## Selected Validation Data



1X10<sup>6</sup> C2C12 cells were intracellularly stained with 0.4 ug CoraLite® Plus 488 Anti-Human smooth muscle actin specific (CL488-80008, Clone:5H7) (red), or 0.4 ug Control Antibody. Cells were fixed with 4% PFA and permeabilized with Flow Cytometry Perm Buffer (PF00011-C).



Immunofluorescent analysis of (4% PFA) fixed mouse heart tissue using CoraLite® Plus 488 smooth muscle actin specific antibody (CL488-80008, Clone: 5H7) at dilution of 1:200.



Immunofluorescent analysis of (4% PFA) fixed mouse heart tissue using CoraLite® Plus 488 smooth muscle actin specific antibody (CL488-80008, Clone: 5H7) at dilution of 1:200.