

For Research Use Only

CoraLite® Plus 488-conjugated MAP2K3 Recombinant antibody

Catalog Number: CL488-80137

Featured Product



Basic Information

Catalog Number:

CL488-80137

Size:

100ul, Concentration: 1000 ug/ml by
Nanodrop;

Source:

Rabbit

Isotype:

IgG

GenBank Accession Number:

BC032478

GeneID (NCBI):

5606

UNIPROT ID:

P46734

Full Name:

mitogen-activated protein kinase
kinase 3

Calculated MW:

347 aa, 39 kDa

Observed MW:

39 kDa

Purification Method:

Protein A purification

CloneNo.:

3010

Recommended Dilutions:

IF/ICC 1:50-1:500

Excitation/Emission maxima wavelengths:

493 nm / 522 nm

Applications

Tested Applications:

IF/ICC

Species Specificity:

Human, Mouse, rat

Positive Controls:

IF/ICC : HeLa cells,

Background Information

MAP2K3, also named as MKK3, is a member of dual specificity kinase group and serves as a specific activator of p38 MAPK with MKK6. MKK3 can be phosphorylated by cytokines and environmental stress at sites Ser189 and Thr193 by MKKK proteins (MEKK 1-4). MKK3 plays a key role in cell differentiation, motility, division and death. It has been reported that MKK3 targeting may represent an effective and potentially safe therapeutic strategy to selectively kill cancer cells in colorectal cancer patients. (PMID: 31695024, 30770795, 26805700, 8622669)

Storage

Storage:

Store at -20°C. Avoid exposure to light. Stable for one year after shipment.

Storage Buffer:

PBS with 50% Glycerol, 0.05% Proclin300, 0.5% BSA, pH 7.3.

Aliquoting is unnecessary for -20°C storage

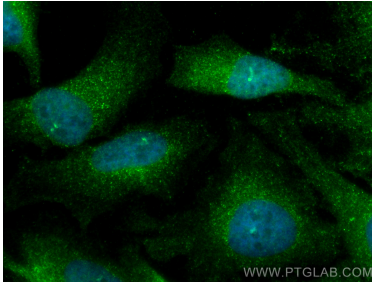
For technical support and original validation data for this product please contact:

T: 1 (888) 4PTGLAB (1-888-478-4522) (toll free
in USA), or 1(312) 455-8498 (outside USA)

E: proteintech@ptglab.com
W: ptglab.com

This product is exclusively available under Proteintech Group brand and is not available to purchase from any other manufacturer.

Selected Validation Data



Immunofluorescent analysis of (4% PFA) fixed HeLa cells using Coralite® Plus 488 Phospho-MAP2K3 (Ser189) antibody (CL488-80137, Clone: 3O10) at dilution of 1:200.