

For Research Use Only

CoraLite® Plus 488-conjugated C1QBP Recombinant antibody



Catalog Number: CL488-80490

Basic Information

| | | |
|---|--|---|
| Catalog Number: CL488-80490 | GenBank Accession Number: BC013731 | Purification Method: Protein A purification |
| Size: 100ul , Concentration: 1000 µg/ml by Nanodrop; | GeneID (NCBI): 708 | CloneNo.: 3K20 |
| Source: Rabbit | Full Name: complement component 1, q subcomponent binding protein | Recommended Dilutions: IF 1:50-1:500 |
| Isotype: IgG | Calculated MW: 282 aa, 31 kDa | Excitation/Emission maxima wavelengths: 488 nm / 515 nm |
| Immunogen Catalog Number: AG19773 | Observed MW: 32 kDa | |

Applications

| | |
|--|---|
| Tested Applications: FC (Intra), IF | Positive Controls: IF : HeLa cells, |
| Species Specificity: Human, Mouse, Rat | |

Background Information

C1QBP, also named as gC1q receptor (gC1qR), p32, p33, and hyaluronan-binding protein 1 (HABP1), is a protein initially copurified with splicing factor SF2 (PMID: 1830244). The protein is synthesized as a pro-protein of 282 amino acids (aa) that is post-translationally processed by removal of the initial 73 aa to a mature protein of 209 aa (PMID: 8262387). C1QBP is an evolutionary conserved and ubiquitously expressed multifunctional protein and has been reported to be a predominantly mitochondrial matrix protein involved in inflammation and infection processes, mitochondrial ribosome biogenesis, regulation of apoptosis and nuclear transcription, and pre-mRNA splicing (PMID: 28942965).

Storage

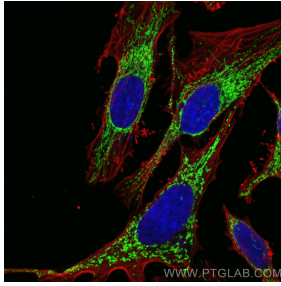
Storage:
Store at -20°C. Avoid exposure to light.
Storage Buffer:
PBS with 50% Glycerol, 0.05% Proclin300, 0.5% BSA, pH 7.3.
Aliquoting is unnecessary for -20°C storage

*** 20ul sizes contain 0.1% BSA

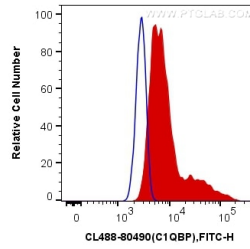
For technical support and original validation data for this product please contact:
T: 1 (888) 4PTGLAB (1-888-478-4522) (toll free in USA), or 1(312) 455-8498 (outside USA)
E: proteintech@ptglab.com
W: ptglab.com

This product is exclusively available under Proteintech Group brand and is not available to purchase from any other manufacturer.

Selected Validation Data



Immunofluorescent analysis of (-20°C Methanol) fixed HeLa cells using CoraLite® Plus 488 C1QBP antibody (CL488-80490, Clone: 3K20) at dilution of 1:100, CoraLite®594 Beta Actin antibody (CL594-66009, Clone: 2D4H5, red).



1X10⁶ HeLa cells were intracellularly stained with 0.4 ug CoraLite® Plus 488 Anti-Human C1QBP (CL488-80490, Clone:3K20) (red), or 0.4 ug Control Antibody. Cells were fixed with 4% PFA and permeabilized with Flow Cytometry Perm Buffer (PF00011-C).