

For Research Use Only

# CoraLite® Plus 488-conjugated Beta Tubulin Recombinant antibody

Catalog Number:CL488-80713



## Basic Information

Catalog Number:

CL488-80713

Size:

100ul , Concentration: 1000 ug/ml by Nanodrop;

Source:

Rabbit

Isotype:

IgG

Immunogen Catalog Number:

AG0117

GenBank Accession Number:

BC000748

GeneID (NCBI):

10381

UNIPROT ID:

Q13509

Full Name:

tubulin, beta 3

Calculated MW:

450 aa, 50 kDa

Observed MW:

50-55 kDa

Purification Method:

Protein A purification

CloneNo.:

2013

Recommended Dilutions:

IF/ICC 1:50-1:500

Excitation/Emission maxima wavelengths:

493 nm / 522 nm

## Applications

Tested Applications:

IF/ICC

Species Specificity:

Human, mouse, rat, zebrafish

Positive Controls:

IF/ICC : HeLa cells,

## Storage

Storage:

Store at -20°C. Avoid exposure to light. Stable for one year after shipment.

Storage Buffer:

PBS with 50% Glycerol, 0.05% Proclin300, 0.5% BSA, pH 7.3.

Aliquoting is unnecessary for -20°C storage

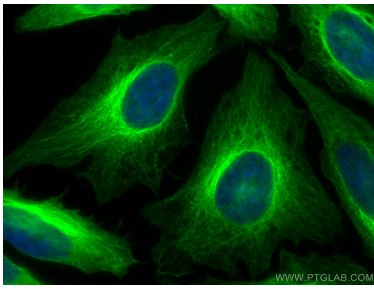
For technical support and original validation data for this product please contact:

T: 1 (888) 4PTGLAB (1-888-478-4522) (toll free in USA), or 1(312) 455-8498 (outside USA)

E: [proteintech@ptglab.com](mailto:proteintech@ptglab.com)  
W: [ptglab.com](http://ptglab.com)

This product is exclusively available under Proteintech Group brand and is not available to purchase from any other manufacturer.

## Selected Validation Data



Immunofluorescent analysis of (4% PFA) fixed HeLa cells using CoraLite® Plus 488 Beta Tubulin antibody (CL488-80713, Clone: 2013 ) at dilution of 1:200.