

For Research Use Only

CoraLite® Plus 488-conjugated KEAP1 Recombinant antibody

Catalog Number: CL488-80744

Featured Product



Basic Information

Catalog Number:

CL488-80744

Size:

100ul , Concentration: 1000 ug/ml by Nanodrop;

Source:

Rabbit

Isotype:

IgG

Immunogen Catalog Number:

AG0779

GenBank Accession Number:

BC002930

GeneID (NCBI):

9817

UNIPROT ID:

Q14145

Full Name:

kelch-like ECH-associated protein 1

Calculated MW:

624 aa, 70 kDa

Observed MW:

55-70 kDa

Purification Method:

Protein A purification

CloneNo.:

5018

Recommended Dilutions:

IF/ICC 1:50-1:500

Excitation/Emission maxima

wavelengths:

493 nm / 522 nm

Applications

Tested Applications:

IF/ICC

Species Specificity:

human, mouse, rat

Positive Controls:

IF/ICC : HeLa cells,

Storage

Storage:

Store at -20°C. Avoid exposure to light. Stable for one year after shipment.

Storage Buffer:

PBS with 50% Glycerol, 0.05% Proclin300, 0.5% BSA, pH 7.3.

Aliquoting is unnecessary for -20°C storage

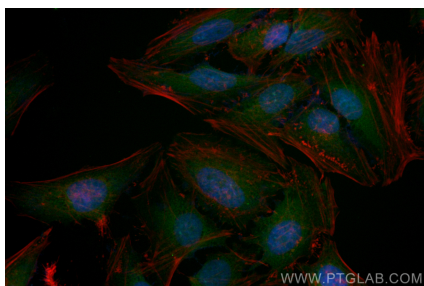
For technical support and original validation data for this product please contact:

T: 1 (888) 4PTGLAB (1-888-478-4522) (toll free in USA), or 1(312) 455-8498 (outside USA)

E: proteintech@ptglab.com
W: ptglab.com

This product is exclusively available under Proteintech Group brand and is not available to purchase from any other manufacturer.

Selected Validation Data



Immunofluorescent analysis of (4% PFA) fixed HeLa cells using CoraLite® Plus 488 KEAP1 antibody (CL488-80744, Clone: 5O18) at dilution of 1:200.