

For Research Use Only

CoraLite® Plus 488-conjugated Lamin A/C Recombinant antibody

Catalog Number: CL488-81042

Featured Product



Basic Information

Catalog Number:

CL488-81042

Size:

100ul, Concentration: 1000 ug/ml by 4000 Nanodrop;

Source:

Rabbit

Isotype:

IgG

Immunogen Catalog Number:

AG0408

GenBank Accession Number:

BC003162

GeneID (NCBI):

4000

ENSEMBL Gene ID:

ENSG00000160789

UNIPROT ID:

P02545

Full Name:

lamin A/C

Calculated MW:

65 kDa

Observed MW:

65-70 kDa

Purification Method:

Protein A purification

CloneNo.:

5I16

Recommended Dilutions:

IF/ICC 1:50-1:500

Excitation/Emission maxima wavelengths:

493 nm / 522 nm

Applications

Tested Applications:

IF/ICC

Species Specificity:

Human, mouse, rat

Positive Controls:

IF/ICC : HepG2 cells,

Background Information

Lamin A/C is also named as LMNA, or LMN1. The lamin family of proteins make up the matrix and are highly conserved in evolution. During mitosis, the lamina matrix is reversibly disassembled as the lamin proteins are phosphorylated. Lamin proteins are thought to be involved in nuclear stability, chromatin structure and gene expression. The lack of lamin A/C can be as a novel marker for undifferentiated embryonic stem cells and lamin A/C expression is as an early indicator of differentiation (PMID: 16179429). Mutations in this gene lead to several diseases: Emery-Dreifuss muscular dystrophy, familial partial lipodystrophy, limb girdle muscular dystrophy, dilated cardiomyopathy, Charcot-Marie-Tooth disease, and Hutchinson-Gilford progeria syndrome. This protein has 4 isoforms produced by alternative splicing with the molecular weight of 74 kDa, 65 kDa, 70 kDa and 64 kDa. This antibody can recognize 4 isoforms of Lamin A/C.

Storage

Storage:

Store at -20°C. Avoid exposure to light. Stable for one year after shipment.

Storage Buffer:

PBS with 50% Glycerol, 0.05% Proclin300, 0.5% BSA, pH 7.3.

Aliquoting is unnecessary for -20°C storage

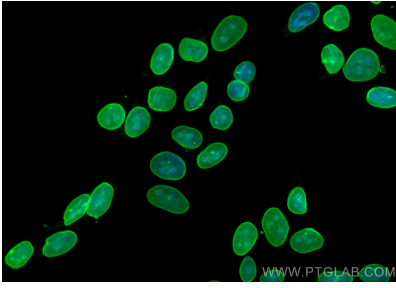
For technical support and original validation data for this product please contact:

T: 1 (888) 4PTGLAB (1-888-478-4522) (toll free in USA), or 1(312) 455-8498 (outside USA)

E: proteintech@ptglab.com
W: ptglab.com

This product is exclusively available under Proteintech Group brand and is not available to purchase from any other manufacturer.

Selected Validation Data



Immunofluorescent analysis of (-20°C Methanol) fixed HepG2 cells using Coralite® Plus 488 Lamin A/C antibody (CL488-81042, Clone: 5I16) at dilution of 1:200.